

Radial fans of the series Silvento ec

Description

Clamp fan ventilator for front wall installation and sanitary cells, type KL-EC

- For quick installation in e.g. sanitary rooms or in lightweight panel coverings with easy installation using simple clamp fastening. Wall or ceiling cut-out 210 x 230 mm.
- Consisting of a fan with a powerful and energy-saving ec-motor in a plastic housing with a clamp fastening that can be operated from the front, a lateral exhaust air connection DN 80 and leakage airtight non-return flap.

Fan insert, type V-EC

- For universal installation in Silvento flush-mounted and surface-mounted housing.
- Consisting of a fan with a powerful and energy-saving ec-motor in a plastic spiral housing for insertion into Silvento flush-mounted and surface-mounted housings.

Order No. V-EC 040 078

Order No. KL-EC 040 079

Type KL-EC and type V-EC

With pluggable mains connection, sound insulation insert, easily replaceable and washable filter and a decorative panel including optical filter change indicator by means of LED indicator.

Functionality is achieved with additional control board. The description of the functionality or fan functions is contained in the LV of the control board.

Protection class IP X5, use in range 1 and 2 according to VDE 0100-701 of wet rooms permitted, protection class II, EMC tested.

Complies with the requirements of EU regulation No. 1253/2014 and the

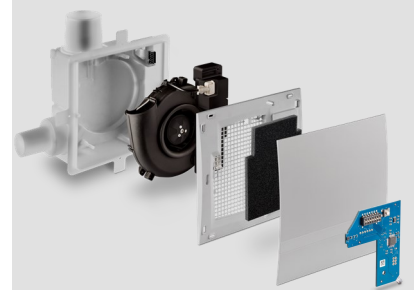
<p>Basic board 5/EC-ZI</p>	<ul style="list-style-type: none"> • Selection of different volume flows for basic ventilation and demand ventilation possible: <table border="1" data-bbox="416 1368 1050 1462"> <tr> <td>m3/hr</td> <td>15/20/30/40/45/50/60/(90)</td> </tr> <tr> <td>l/s</td> <td>4/6/8/11/13/14/17/(25)</td> </tr> </table> • Time delay adjustable to 0, 15 or 30 minutes • Interval switching: every 30 minutes demand ventilation every four hours or 15 minutes ventilation every two hours • Switch-on delay adjustable to OFF, 45 or 120 second • Slot for a collection module: <ul style="list-style-type: none"> • Radar based motion detector 5/BM or • Radio module FM-EO or • Diagnostic cable 	m3/hr	15/20/30/40/45/50/60/(90)	l/s	4/6/8/11/13/14/17/(25)
m3/hr	15/20/30/40/45/50/60/(90)				
l/s	4/6/8/11/13/14/17/(25)				
<p>Comfort board 5/EC-FK</p>	<p>Like basic board and additionally</p> <ul style="list-style-type: none"> • Stepless comfort humidity-temperature control 				
<p>Comfort board+ 5/EC-FK+</p>	<p>Like comfort board and additionally</p> <ul style="list-style-type: none"> • VOC sensor <ul style="list-style-type: none"> • Smell detection • Pollutant detection (e.g. formaldehyde/solvents) • CO₂ value determination 				



Silvento V-EC



Silvento KL-EC



Silvento second-room set

E248 12.20

Radial fans of the series Silvento ec

Technical data

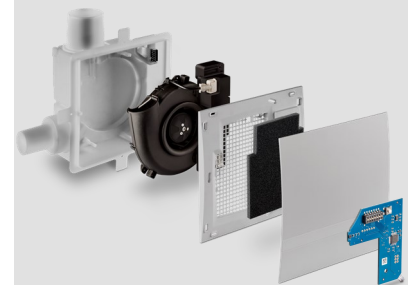
Silvento type V-EC or KL-EC	Boards 5/EC-ZI (90) 5/EC-FK (90) 5/EC-FK+ (90)
Volume flow	15/20/30/40/45/50/60/(90) m ³ /h
Sound power level L _w	18/22/29/36/38/40/44/(52) dB(A)
Sound pressure level at a distance of 1 m	10/14/21/28/30/32/36/(44) dB(A)
Sound pressure level at a distance of 3 m	0/5/12/18/20/23/26/(34) dB(A)
Power consumption	1,8 - 6,2 (14,5) W
Supply voltage	200 - 240 V AC 50/60 Hz
Control voltage	0 - 10 V
Dimensios (B x H x T)	Surface-mounted: 260 x 260 x 108 mm Screen: 260 x 260 x 23 mm In-wall housing: 235 x 235 x 92 mm
Protection class	IPX5



Silvento V-EC



Silvento KL-EC



Silvento second-room set

Note

Products and illustrations may be subject to slight variation. Due to continuous product development and/or several suppliers e.g. for raw materials, colours, among other things, may vary slightly (not for visible parts) or be shown differently in brochures.

E248 12.20