



2023

HVAC SOLUTIONS

FOR POOLS, LEISURE CENTRES, BUILDINGS, AGRICULTURE AND STORAGE

DANTHERM GROUP




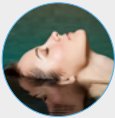

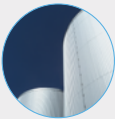
About the Dantherm Group

Dantherm Group is a European leader in portable and installed climate control solutions for a wide range of industries and uses. Based on the heritage of the variety of brands we own, our climate control experts build and manufacture hundreds of thousands of exceptional heating, cooling, dehumidification, air cleaning and ventilation units in our own factories in Europe every year. All of them are designed to create healthy and comfortable climate surroundings in a sustainable, energy-efficient and cost-effective way.

Why partner with us

- European design quality
- Experts in climate control
- Extensive range of solutions

INDEX

| Product | Name | Description | Applications | Page |
|---|---|---|--|-----------|
|  | SWIMMING POOL HEAT PUMPS | Enjoy energy efficient all-year-round heating with an inverter swimming pool heat pump. With high heating performance at lower temperatures and quiet operation, our range of inverter heat pumps are suitable for residential or commercial swimming pools. | <ul style="list-style-type: none"> ● Private pools ● Spas, therapy & wellness pools ● Plunge pools ● Hotels & health clubs ● Holiday parks & campsites ● Water parks | 6 |
|  | SWIMMING POOL DEHUMIDIFIERS | Swimming pool dehumidifiers are available as wall-mounted or floor-standing domestic units, through to high capacity and commercial ducted swimming pool dehumidifiers for any size pool or environment – offering complete humidity climate control solutions. | <ul style="list-style-type: none"> ● Private pools ● Spas, therapy & wellness pools ● Plunge pools ● Hotels & health clubs ● Holiday parks & campsites | 24 |
|  | SWIMMING POOL AIR HANDLING UNITS | We supply swimming pool air handling units that are suitable for all sizes of pool, including commercial or public indoor swimming pools. The units provide effective climate control to perfectly manage temperature and humidity, supplying clean, fresh and comforting air in the pool room or area. | <ul style="list-style-type: none"> ● Public pools ● Leisure centres ● Schools ● Hotels & health clubs ● Holiday parks & campsites | 34 |
|  | CONDENSE DEHUMIDIFIERS | Condensation dehumidifiers are ideal for warehousing and storage, substations and data centres, as well as in building and water damage drying, or any industrial and commercial application including water management, and protecting and preserving the value of assets. | <ul style="list-style-type: none"> ● Drying rooms ● Preservation ● Museums, archives & galleries ● Data centres & electronics ● Warehousing & storage | 39 |

HEATING AND COOLING SOLUTIONS FOR: PRIVATE AND DOMESTIC SWIMMING POOLS

QUICK GUIDE



C-PAC+
HEAT PUMP



I-PAC
HEAT PUMP



I-PAC+
HEAT PUMP



V-PAC
HEAT PUMP

POOL TYPE



OUTDOOR



INDOOR



ABOVE GROUND



OPERATION



HEATING



COOLING



INVERTER



APPLICATIONS



PRIVATE POOLS



SPAS, THERAPY
& WELLNESS



PLUNGE POOLS



HOTELS, HEALTH
CLUBS & SPORT
ACADEMIES



HEATING AND COOLING SOLUTIONS FOR: PUBLIC AND COMMERCIAL SWIMMING POOLS

QUICK GUIDE



I-PAC BHC*



I-PAC BLY

POOL TYPE



OUTDOOR



INDOOR



OPERATION



HEATING



COOLING



ALL YEAR HEATING



APPLICATIONS



HOTELS, HEALTH CLUBS & SPORT ACADEMIES



HOLIDAY PARKS & CAMPSITES



WATER PARKS



DESIGNED SPECIFICALLY FOR THE GULF CLIMATE



WHY CHOOSE OUR SWIMMING POOL PRODUCTS?



CHOOSING THE BEST SOLUTION

We can offer two proven technologies for environmental control – fresh air dehumidification with heat recovery and heat pump dehumidification with air to air and air to water heat recovery.



POOL HEAT PUMP TECHNOLOGY

A sustainable way to dynamically heat your swimming pool saving both energy and operating costs.



HEALTHY SWIMMING ENVIRONMENTS

Our dehumidifiers and AHUs are designed to economically provide the environmental comfort and moisture related structural protection necessary for a pool.



WHOLE BUILDING SOLUTIONS

Not only do we have pool environmental control units but we can provide ventilation for all other areas of your leisure facility including gyms, changing rooms and foyers.



REDUCE OPERATING COSTS

We focus on developing energy saving units.



CREATING THE RIGHT POOL TEMPERATURE

We have products that heat or cool the pool depending on the outside temperature to create the perfect swimming environment.



PROTECTING THE ENVIRONMENT

Our development teams focus on reducing the carbon foot print by making our products as environmentally friendly as possible.



TECHNICAL SUPPORT AND AFTER-SALES CARE

Network of service agents and accredited technicians available from Dantherm Group Denmark, UK and Italy and through local distributors.

SWIMMING POOL HEAT PUMPS

While all heat pumps offer sustainable, dynamic heating or cooling for your swimming pool, none offer the same energy savings and reduced running costs as our Calorex range.

Our heat pump systems provide total temperature control all year round, working at temperatures as low as -10°C for both indoor and outdoor pools. This versatility and reliability across our range ensures your water remains at the optimal warmth, whether you run a busy leisure park, a soothing spa, or are taking care of your own pool at home.

As well as effortless heating and cooling, Calorex heat pumps can save you up to 75% on both operating costs and carbon savings against electric heaters, offering a solution that is as economic as it is effective.



C-PAC+ heat pumps are an environmentally friendly and efficient way to heat your swimming pool. The low energy consumption coupled with high heat production makes for lower pool running costs. Unlike alternative ways of heating your pool, the C-PAC+ requires no fuel storage tank or high capacity electrical supply and produces no smells, fumes or CO₂ gases.



- Quiet, aesthetically pleasing design
- Eco-friendly refrigerant R32* = 675 GWP, (Global Warming Potential)
- ABS cabinet
- Rotary compressor
- Titanium heat exchanger
- Reverse cycle defrost – operation to -10°C air temperature
- Can heat water to 40°C
- Multifunction operation – can be set to heating, cooling and heat/cool
- ‘Smart’ pool pump control
- Water flow switch

**Only C-PAC+ 6-15 are R32.*

Included in the box



**Rubber feet
(kit of 4)
1005526**

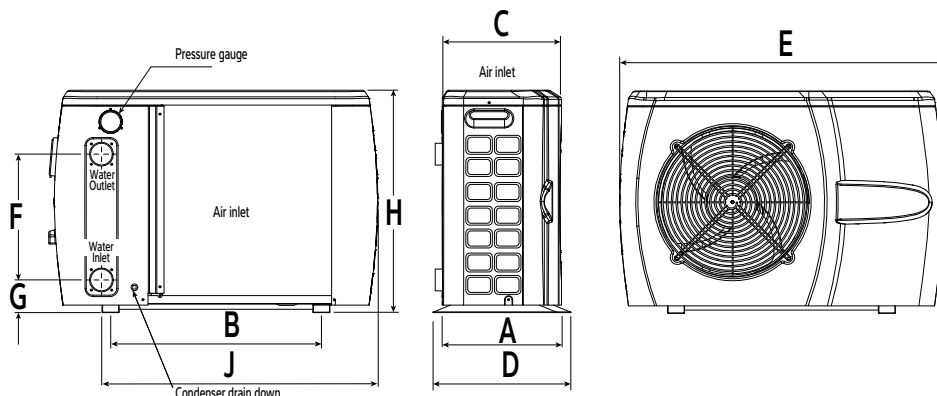


**Drainage kit
1005558**



**Water union
connectors 2 x 1½
2 x 50mm 1005629**

Dimensions (mm)



| Model | A | B | C | D | E | F | G | H | J |
|---------------------|-----|-----|-----|-----|------|-----|----|-----|------|
| C-PAC+ 6ALY | 381 | 620 | 363 | 405 | 968 | 370 | 96 | 654 | 741 |
| C-PAC+ 8ALY | 381 | 620 | 363 | 405 | 968 | 370 | 96 | 654 | 741 |
| C-PAC+ 12ALY | 466 | 750 | 443 | 490 | 1130 | 395 | 87 | 709 | 933 |
| C-PAC+ 15ALY | 466 | 750 | 443 | 490 | 1130 | 395 | 87 | 709 | 933 |
| C-PAC+ 20ALY | 496 | 870 | 470 | 520 | 1299 | 475 | 65 | 809 | 1077 |

| Specifications | Units | C-PAC+ 6ALY | C-PAC+8ALY | C-PAC+ 12ALY | C-PAC+ 15ALY | C-PAC+ 20BLY |
|-------------------------|-------|-------------|------------|--------------|--------------|--------------|
| Air temperature range | °C | -10-43 | -10-43 | -10-43 | -10-43 | -10-43 |
| Water temperature range | °C | 8-40 | 8-40 | 8-40 | 8-40 | 8-40 |

Performance – air 24°C 80% RH, Water 26°C

| | | | | | | |
|------------------|----|-----|-----|------|------|------|
| Heating capacity | kW | 7.5 | 8.9 | 13.5 | 16.9 | 23.1 |
| Input power | kW | 1.2 | 1.4 | 2.0 | 2.7 | 4.6 |
| COP | - | 6.3 | 6.4 | 6.6 | 6.3 | 5.0 |

Performance – air 15°C 70% RH, Water 26°C

| | | | | | | |
|------------------|----|-----|-----|------|------|------|
| Heating capacity | kW | 5.8 | 6.9 | 10.8 | 14.1 | 20.0 |
| Input power | kW | 1.2 | 1.4 | 2.1 | 2.7 | 4.9 |
| COP | - | 4.6 | 4.8 | 5.2 | 5.1 | 4.1 |

Performance – air 5°C 100% RH, Water 26°C

| | | | | | | |
|---------------------------------------|-------|-------------|-------------|--------------|--------------|--------------|
| Heating capacity | kW | 4.7 | 5.1 | 8.2 | 10.6 | 14.1 |
| Input power | kW | 1.1 | 1.3 | 1.9 | 2.7 | 3.9 |
| COP | - | 4.2 | 3.9 | 4.3 | 3.9 | 3.6 |
| Power supply | V/Hz | 230/1ph/50 | 230/1ph/50 | 230/1ph/50 | 230/1ph/50 | 400/3ph/50 |
| Max. current | A | 10.0 | 15.3 | 18.3 | 25.3 | 11.1 |
| Air flow | m³/h | 2,100 | 2,100 | 3,500 | 3,500 | 5,000 |
| Sound pressure level @ 3m | dB(A) | 37 | 38 | 39 | 39 | 41 |
| Sound pressure level @ 10m | dB(A) | 28 | 29 | 30 | 30 | 32 |
| Refrigerant | | R32 | R32 | R32 | R32 | R410A |
| Gas weight/CO ₂ equivalent | kg/t | 0.9/0.61 | 1.0/0.68 | 1.5/1.01 | 1.5/1.01 | 2.8/5.85 |
| Product size (w x d x h) | mm | 933x401x657 | 933x401x657 | 1130x490x709 | 1133x490x709 | 1299x520x809 |
| Weight | kg | 50 | 59 | 71 | 93 | 117 |

SMALL INVERTER HEAT PUMPS CALOREX I-PAC 8-12-16-22

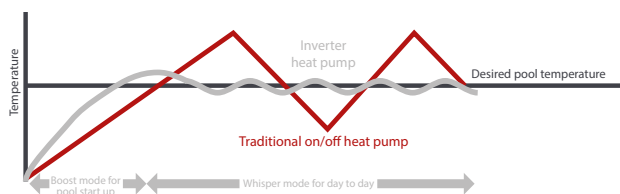


Inverter technology allows for efficient control of the pool temperature, and the I-PAC only uses what energy is needed when it is required. High efficiency with modulating step-less inverter compressor giving an average COP of 9.7.



- Average COP 9.7 = 2 x more efficient than on/off heat pumps
- R32 = 675 GWP, (Global Warming Potential)
- Inverter heat pump
- Power ratings from 9.5 to 25kW
- 9-11 dB(A) sound reduction compared to an equivalent on/off heat pump, with 'Whisper Mode'
- Operates in air temperatures of -5°C to 43°C
- Integrated controller with a touchscreen user interface
- Function settings for heating, cooling or heat/cool
- Soft start-up
- Aluminium alloy
- Built-in Wi-Fi module
- Winter protection cover included

Temperature control chart



The PoolTherm App for our Calorex I-PAC inverter heat pumps is available on Android and iOS. Simply search for 'PoolTherm' in App Store or Google Play and download it today!



Included in the box



**Rubber feet
(kit of 4)
1005526**



**Drainage kit
1005558**



**Water union
connectors 2 x 1½
2 x 50mm 1005629**

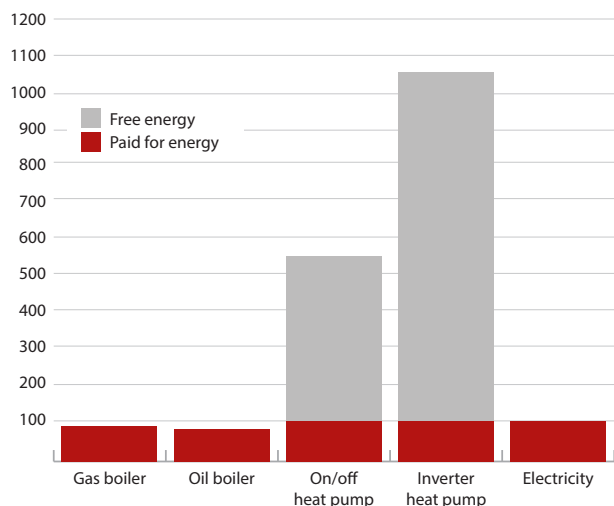


**Remote LED
control kit w/10m
cable 1005544**

SMALL INVERTER HEAT PUMPS CALOREX I-PAC 8-12-16-22

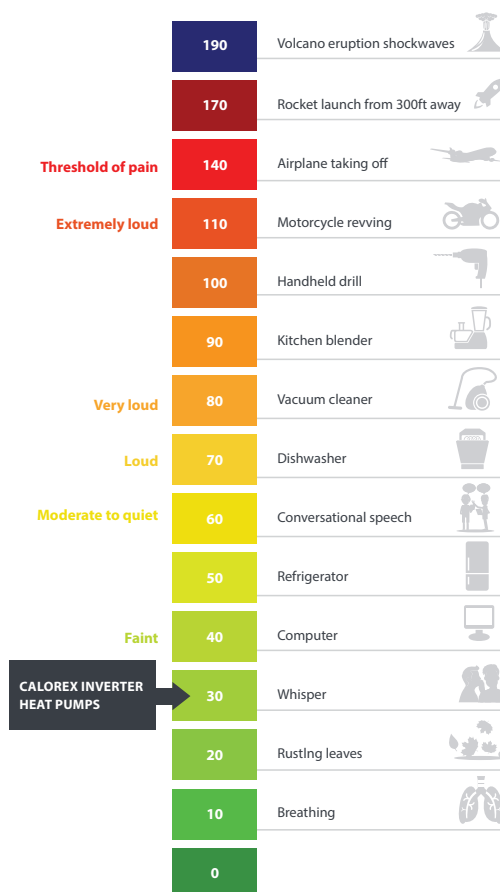


Heating method efficiency chart

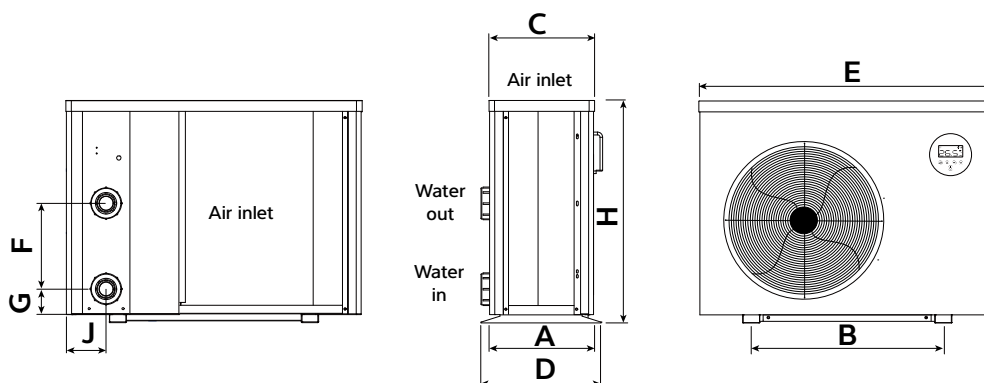


Great value, and environmentally conscious heating option, with energy consumption half that of a traditional on/off heat pump, and 1/10 of that for gas or electric pool heating.

Where our heat pump sits on the decibel scale



Dimensions (mm)



| Model | A | B | C | D | E | F | G | H | J |
|-------------|-----|-----|-----|-----|------|-----|----|-----|-----|
| I-PAC 8ALX | 334 | 560 | 318 | 359 | 864 | 250 | 74 | 648 | 116 |
| I-PAC 12ALX | 334 | 560 | 318 | 359 | 864 | 290 | 74 | 648 | 116 |
| I-PAC 16ALX | 334 | 590 | 318 | 359 | 954 | 390 | 74 | 748 | 116 |
| I-PAC 22ALX | 404 | 720 | 388 | 429 | 1084 | 640 | 74 | 948 | 107 |

| Specifications | Units | I-PAC 8ALX | I-PAC 12ALX | I-PAC 16ALX | I-PAC 22ALX |
|--|-------------------|-----------------|-----------------|-----------------|------------------|
| Air temperature range | °C | -5-43 | -5-43 | -5-43 | -5-43 |
| Water temperature range | °C | 12-40 | 12-40 | 12-40 | 12-40 |
| Performance – air 27°C 80% RH, water 27°C | | | | | |
| Heating capacity | kW | 9.5 | 13.0 | 20.0 | 25.0 |
| COP range | | 13.2-5.4 | 13.5-5.6 | 13.5-5.7 | 13.8-5.8 |
| Average COP at 50% speed | | 8.9 | 9.7 | 9.3 | 9.6 |
| Performance – air 15°C 70% RH, water 26°C | | | | | |
| Heating capacity | kW | 7.0 | 9.5 | 13.5 | 17.0 |
| COP range | kW | 6.9-4.2 | 7.0-4.0 | 7.0-4.2 | 7.2-4.0 |
| Average COP at 50% Speed | kW | 6.3 | 6.1 | 6.3 | 6.4 |
| Performance – air 5°C 70% RH, water 10°C | | | | | |
| Heating capacity | kW | 4.1 | 5.6 | 7.9 | 9.9 |
| Performance – air 35°C 80% RH, water 28°C | | | | | |
| Cooling capacity | kW | 3.9 | 5.2 | 7.4 | 9.4 |
| Power supply | V/Hz | 230/1ph/50 | 230/1ph/50 | 230/1ph/50 | 230/1ph/50 |
| Rated input power | kW | 0.3-1.79 | 0.40-2.38 | 0.57-3.21 | 0.69-4.25 |
| Maximum input current | A | 9.5 | 12.5 | 19.5 | 20.0 |
| Water flow | m ³ /h | 3.0-5.0 | 4.0-6.0 | 7.0-10.0 | 10.0-12.0 |
| Water connection | "/mm | 1½/50 | 1½/50 | 1½/50 | 1½/50 |
| Compressor | | Inverter | Inverter | Inverter | Inverter |
| Condenser | | Titanium | Titanium | Titanium | Titanium |
| R32 gas weight/CO ₂ equivalent | kg/t | 0.6/0.41 | 0.9/0.61 | 1.1/0.74 | 2.0/1.35 |
| Sound pressure level @ 10m | dB(A) | 19.6-31.5 | 21.9-32.0 | 24.3-36.1 | 24.9-36.7 |
| Product size (w x d x h) | mm | 864 x 359 x 648 | 864 x 359 x 648 | 954 x 359 x 748 | 1084 x 429 x 948 |
| Weight | kg | 47 | 49 | 68 | 90 |

SMALL INVERTER HEAT PUMPS

CALOREX I-PAC+ 12-16-22-28



Benefits

- All year heating for outdoor and indoor pools
- Can operate down to -10°C ambient air temperature
- High heating performance at lower temperatures – ideal for quick pool heat up at the start of the season
- Pool heating at altitude
- Higher cooling capacity
- Most efficient models – highest COP



- COP >10 = 2 x more efficient than on/off heat pumps
- R32 = 675 GWP, (Global Warming Potential)
- Inverter heat pump
- Power ratings from 15 to 36kW
- 9-11 dB(A) sound reduction compared to an equivalent on/off heat pump, with 'Whisper Mode'.
- Operates in air temperatures of -10°C to 43°C
- Integrated controller with a touchscreen user interface
- Function settings for heating, cooling or heat/cool
- Soft start-up
- Aluminium alloy
- Built-in Wi-Fi module
- Winter protection cover included

Optional accessories



Remote LED control kit w/10m cable 1005544



The PoolTherm App for our Calorex I-PAC inverter heat pumps is available on Android and iOS. Simply search for 'PoolTherm' in App Store or Google Play and download it today!



Included in the box



Rubber feet (kit of 4) 1005526



Drainage kit 1005558

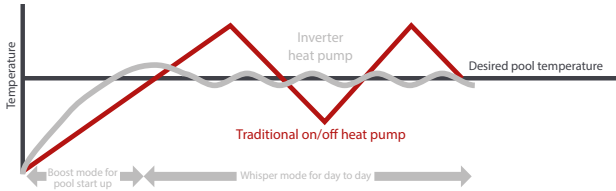


Water union connectors 2 x 1½ 2 x 50mm 1005629

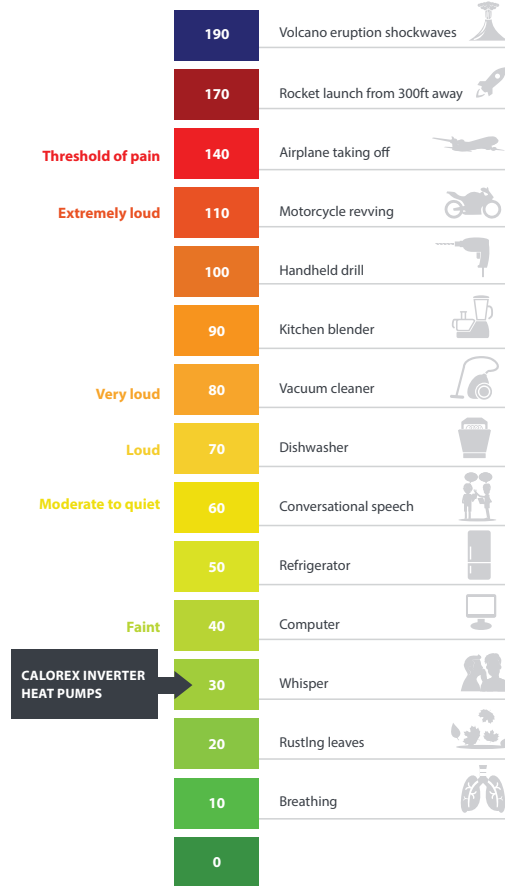
SMALL INVERTER HEAT PUMPS CALOREX I-PAC+ 12-16-22-28



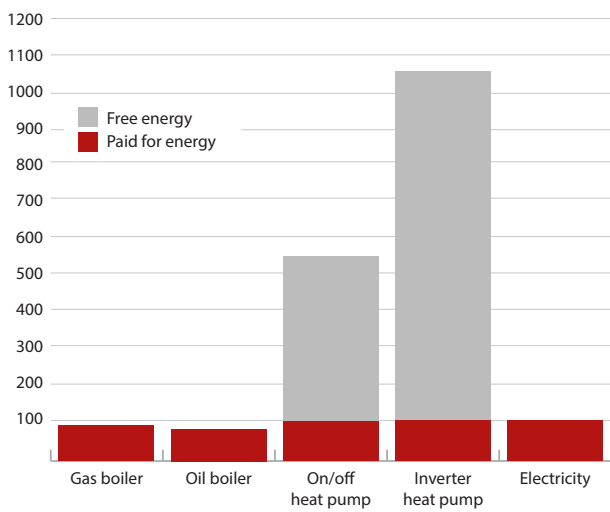
Temperature control chart



Where our heat pump sits on the decibel scale

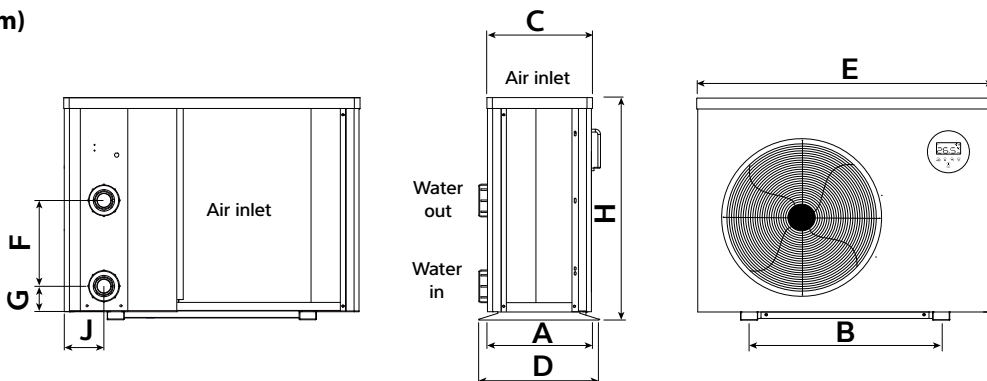


Heating method efficiency chart



Great value, and environmentally conscious heating option, with energy consumption half that of a traditional on/off heat pump, and 1/10 of that for gas or electric pool heating.

Dimensions (mm)



| Model | A | B | C | D | E | F | G | H | J |
|-------------|-----|-----|-----|-----|------|-----|----|-----|-----|
| I-PAC 12ALY | 334 | 590 | 318 | 359 | 954 | 340 | 74 | 648 | 107 |
| I-PAC 16ALY | 404 | 590 | 388 | 429 | 954 | 460 | 74 | 755 | 107 |
| I-PAC 16BLY | 404 | 590 | 388 | 429 | 954 | 460 | 74 | 755 | 107 |
| I-PAC 22ALY | 404 | 720 | 388 | 429 | 1084 | 620 | 74 | 948 | 107 |
| I-PAC 22BLY | 404 | 720 | 388 | 429 | 1084 | 620 | 74 | 948 | 107 |
| I-PAC 28BLY | 514 | 790 | 498 | 539 | 1154 | 650 | 74 | 948 | 128 |

| Specifications | Units | I-PAC+ 12ALY | I-PAC+ 16ALY | I-PAC+ 16BLY | I-PAC+ 22ALY | I-PAC+ 22BLY | I-PAC+ 28BLY |
|---|-------------------|-----------------|-----------------|-----------------|------------------|------------------|------------------|
| Air temperature range | °C | -10-43 | -10-43 | -10-43 | -10-43 | -10-43 | -10-43 |
| Water temperature range | °C | 12-40 | 12-40 | 12-40 | 12-40 | 12-40 | 12-40 |
| Performance – air 27°C 80% RH, water 27°C | | | | | | | |
| Heating capacity | kW | 15.0 | 21.0 | 21.0 | 27.5 | 27.5 | 36.0 |
| COP range | | 15.0-6.6 | 14.8-6.4 | 14.8-6.4 | 15.0-6.5 | 15.0-6.8 | 14.8-6.0 |
| Average COP at 50% speed | | 10.6 | 10.3 | 10.3 | 10.3 | 10.3 | 10.2 |
| Performance – air 15°C 70% RH, water 26°C | | | | | | | |
| Heating capacity | kW | 10.5 | 14.5 | 14.5 | 18.0 | 18.0 | 23.9 |
| COP range | kW | 7.7-4.6 | 7.1-4.6 | 7.5-4.6 | 7.1-4.6 | 7.5-4.6 | 7.5-4.6 |
| Average COP at 50% speed | kW | 6.4 | 6.3 | 6.3 | 6.3 | 6.3 | 6.3 |
| Performance – air 5°C 70% RH, water 10°C | | | | | | | |
| Heating capacity | kW | 7.5 | 9.6 | 9.6 | 11.9 | 11.9 | 16.0 |
| Performance – air -10°C 70% RH, water 23°C | | | | | | | |
| Heating capacity | kW | 4.6 | 5.9 | 5.9 | 7.3 | 7.3 | 8.8 |
| Performance – air 35°C 80% RH, water 28°C | | | | | | | |
| Cooling capacity | kW | 6.7 | 9.5 | 9.5 | 11.9 | 11.9 | 16.0 |
| Power supply | V/Hz | 230/1ph/50 | 230/1ph/50 | 400/3ph/50 | 230/1ph/50 | 400/3ph/50 | 400/3ph/50 |
| Rated input power | kW | 0.27-2.28 | 0.41-3.15 | 0.41-3.15 | 0.48-3.91 | 0.48-3.91 | 0.64-5.20 |
| Maximum input current | A | 13.5 | 17.0 | 5.8 | 20.0 | 7.0 | 9.5 |
| Water flow | m ³ /h | 5.0-7.0 | 8.0-10.0 | 8.0-10.0 | 10.0-12.0 | 10.0-12.0 | 12.0-18.0 |
| Water connection | "/mm | 1½/50 | 1½/50 | 1½/50 | 1½/50 | 1½/50 | 1½/50 |
| Compressor | | Inverter | Inverter | Inverter | Inverter | Inverter | Inverter |
| Condenser | | Titanium | Titanium | Titanium | Titanium | Titanium | Titanium |
| R32 gas weight/CO ₂ equivalent | kg/t | 0.9/0.61 | 1.2/0.81 | 2.0/1.35 | 1.2/0.81 | 2.0/1.35 | 2.7/1.82 |
| Sound pressure level @ 10m | dB(A) | 20.8-24.5 | 20.4-33.7 | 20.4-33.7 | 23.0-34.4 | 23.0-34.4 | 22.1-34.2 |
| Product size (w x d x h) | mm | 954 x 359 x 648 | 954 x 429 x 755 | 954 x 429 x 755 | 1084 x 429 x 948 | 1084 x 429 x 948 | 1154 x 539 x 948 |
| Weight | kg | 52 | 68 | 68 | 90 | 93 | 120 |

SMALL INVERTER HEAT PUMPS

CALOREX V-PAC 12-16-22



Inverter technology allows for efficient control of the pool temperature, and the V-PAC only uses what energy is needed when it is required. High efficiency with modulating step-less inverter compressor.



- Average COP 10.7 = 2 x more efficient than on/off heat pumps
- Eco-friendly refrigerant R32 = 675 GWP, (Global Warming Potential)
- Inverter heat pump
- Power ratings from 14 to 24kW
- 9-11 dB(A) sound reduction than on/off heat pump, with 'Whisper Mode'.
- Ideal for confined spaces
- Operates in air temperatures of -5°C to +43°C
- Integrated controller with a user interface
- Function settings for heating, cooling or heat/cool
- Soft start-up
- ABS cabinet

Included in the box



**Rubber feet
(kit of 4)
1005526**



**Drainage kit
1005558**



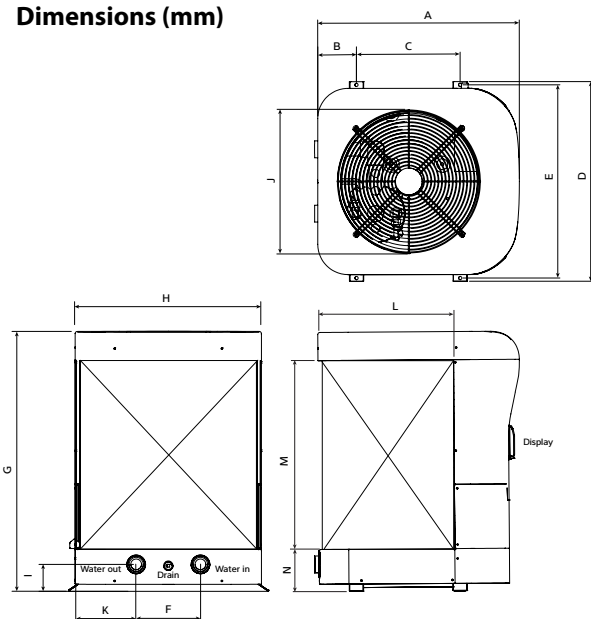
**Water union
connectors 2 x 1½
2 x 50mm 1005629**

SMALL INVERTER HEAT PUMPS

CALOREX V-PAC 12-16-22



Dimensions (mm)



| Model | A | B | C | D | E | F | G |
|-------------|-----|-----|-----|-----|-----|-----|-----|
| V-PAC 12ALX | 650 | 98 | 362 | 650 | 626 | 220 | 835 |
| V-PAC 16ALX | 650 | 98 | 362 | 650 | 626 | 220 | 835 |
| V-PAC 22ALX | 752 | 138 | 387 | 745 | 721 | 240 | 967 |

| Model | H | I | J | K | L | M | N |
|-------------|-----|----|-----|-----|-----|-----|-----|
| V-PAC 12ALX | 600 | 92 | 490 | 190 | 430 | 588 | 130 |
| V-PAC 16ALX | 600 | 92 | 490 | 190 | 430 | 588 | 130 |
| V-PAC 22ALX | 695 | 92 | 530 | 228 | 505 | 705 | 157 |

| Specifications | Units | V-PAC 12ALX | V-PAC 16ALX | V-PAC 22ALX |
|--|-------------------|-----------------|-----------------|-----------------|
| Air temperature range | °C | -5-43 | -5-43 | -5-43 |
| Water temperature range | °C | 8-40 | 8-40 | 8-40 |
| Performance – air 27°C 80% RH, water 27°C | | | | |
| Heating capacity | kW | 14.1 | 18.5 | 24.4 |
| COP range | | 13.5-6.28 | 13.5-6.03 | 13.5-5.14 |
| Average COP at 50% speed | | 9.7 | 9.3 | 8.8 |
| Performance – air 15°C 70% RH, water 26°C | | | | |
| Heating capacity | kW | 10.6 | 13.6 | 17.8 |
| COP range | | 8.5-5.11 | 8.4-5.02 | 6.2-4.14 |
| Average COP at 50% speed | | 6.5 | 6.4 | 4.7 |
| Performance – air 5°C 70% RH, water 10°C | | | | |
| Heating capacity | kW | 6.2 | 9.0 | 11.5 |
| Performance – air 35°C 80% RH, water 28°C | | | | |
| Cooling capacity | kW | 6.23 | 6.7 | 10.3 |
| Power supply | V/Hz | 230/1ph/50 | 230/1ph/50 | 230/1ph/50 |
| Rated input power | kW | 0.20-2.24 | 0.23-3.06 | 0.75-4.75 |
| Maximum input current | A | 12.5 | 15.5 | 24.5 |
| Water flow | m ³ /h | 5.0 | 6.5 | 9.0 |
| Water connection | "/mm | 1½/50 | 1½/50 | 1½/50 |
| Compressor | | Inverter | Inverter | Inverter |
| Condenser | | Titanium | Titanium | Titanium |
| R32 gas weight/CO ₂ equivalent | kg/t | 0.8/0.54 | 0.8/0.54 | 1.7/1.15 |
| Sound pressure level @ 10m | dB(A) | < 29 | < 30 | < 30 |
| Product size (w x d x h) | mm | 650 x 650 x 835 | 650 x 650 x 835 | 745 x 752 x 967 |
| Weight | kg | 70 | 80 | 95 |

INVERTER HEAT PUMPS CALOREX I-PAC 50-100BLY

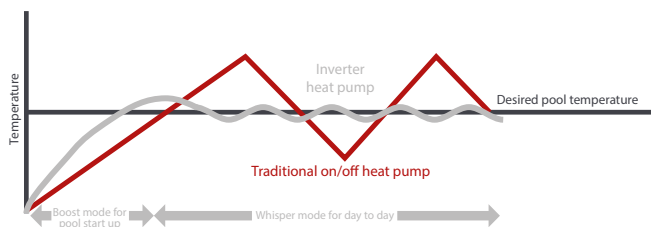


Inverter technology allows for efficient control of the pool temperature, and the I-PAC BLY only uses what energy is needed when it is required. High efficiency with modulating step-less inverter compressor giving an average COP of 10.5 (I-PAC 50BLY) and 10 (I-PAC 100BLY).



- Average COP 10 = 2 x more efficient than on/off heat pumps
- Inverter heat pump
- Titanium heat exchanger
- Fully automatic operation
- Comprehensive circuit protection
- Quiet efficient axial fans
- Weather proof construction
- Multifunction operation functions can be set to heating, heat/cool and cooling
- 10-12 dB(A) sound reduction than on/off heat pump with 'Whisper Mode'
- Soft start-up
- Aluminium alloy
- 50/60Hz compatible
- BMS Connectivity
- Built-in Wi-Fi module

Temperature control chart



Applications

- Outdoor and indoor pools
- Hotel and spa pools
- Health clubs
- Wellness centres
- Therapy pools



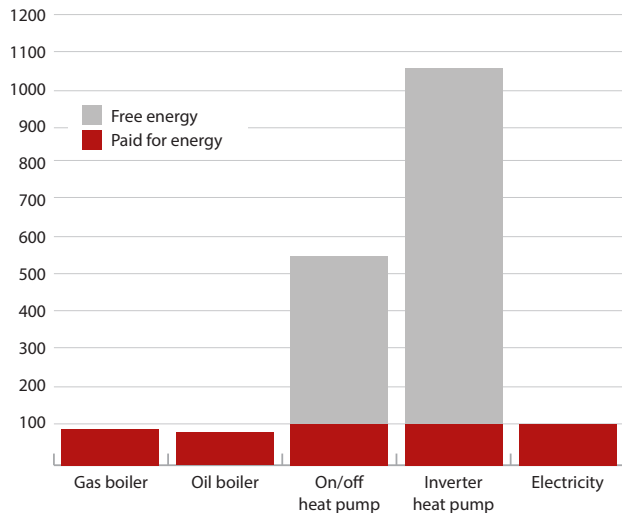
The PoolTherm App for our Calorex I-PAC inverter heat pumps is available on Android and iOS. Simply search for 'PoolTherm' in App Store or Google Play and download it today!



INVERTER HEAT PUMPS CALOREX I-PAC 50-100BLY

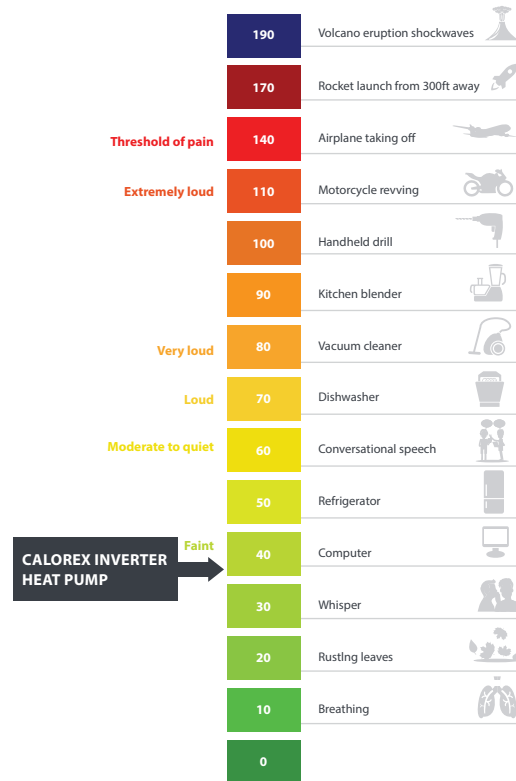


Heating method efficiency chart



Great value, and environmentally conscious heating option, with energy consumption half that of a traditional on/off heat pump, and 1/10 of that for gas or electric pool heating.

Where our heat pump sits on the decibel scale



| Specifications | Units | I-PAC 50BLY | I-PAC 100BLY |
|--|-------------------|--------------------|--------------------|
| Air temperature range | °C | -7-43 | -7-43 |
| Performance – air 27°C 80% RH, water 27°C | | | |
| Heating capacity | kW | 60.2 | 115.0 |
| Average COP @50% speed | | 10.5 | 10.0 |
| Performance – air 15°C 70% RH, water 26°C | | | |
| Heating capacity | kW | 40.1 | 80.8 |
| Average COP @50% speed | | 7.0 | 6.7 |
| Performance – air 5°C 70% RH, water 26°C | | | |
| Heating capacity | kW | 27 | 55 |
| Average COP @50% speed | | 4.8 | 4.8 |
| Performance – air 35°C 80% RH, water 28°C | | | |
| Cooling capacity | kW | 26.8 | 53.5 |
| Power supply | V/Hz | 400/3ph/50-60 | 400/3ph/50-60 |
| Rated input power | kW | 2.10-8.18 | 4.25-17.0 |
| Rated current input | A | 3.05-11.90 | 6.16-24.7 |
| Max. input current | A | 19 | 38 |
| Water flow | m ³ /h | 20-25 | 40-50 |
| Water Pressure Drop | kPa. | 50 is 13 | 100 is 25 |
| Water connection | mm | 75 | 110 |
| Compressor | | Inverter | Inverter |
| Heat exchanger | | Titanium | Titanium |
| R410A gas weight/CO ₂ equivalent | kg/t | 8.0/16.70 | 16/33.41 |
| Sound pressure level @ 1m | dB(A) | 53-61 | 55-64 |
| Sound pressure level @ 10m | dB(A) | 33-41 | 35-44 |
| Product size (w x d x h) | mm | 1000 x 1075 x 1260 | 2100 x 1090 x 1280 |
| Weight | kg | 230 | 448 |

INVERTER HEAT PUMPS CALOREX I-PAC 50-100BHC

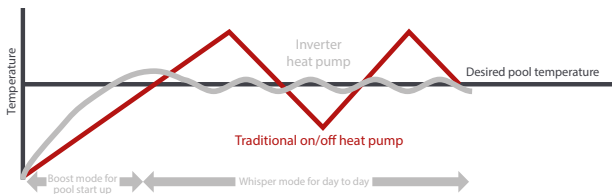


Inverter technology allows for efficient control of the pool temperature, and the I-PAC BHC only uses what energy is needed when it is required. High efficiency with modulating step-less inverter compressor giving an average COP of 10.5 (I-PAC 50BHC) and 10.0 (I-PAC 100BHC).



- Average COP 10 = 2 x more efficient than on/off heat pumps
- Inverter heat pump
- Titanium heat exchanger
- Fully automatic operation
- Comprehensive circuit protection
- Quiet efficient axial fans
- Weather proof construction
- Multifunction operation functions can be set to heating, heat/cool and cooling
- 10-12 dB(A) sound reduction than on/off heat pump with 'Whisper Mode'
- 'Enhanced Vapour Injection' technology for efficient operation, even on the hottest summer days
- Soft start-up
- Aluminium alloy
- Optimised for Gulf climate
- BMS Connectivity
- Built-in Wi-Fi module

Temperature control chart



Applications

- Outdoor and indoor pools (Gulf and SE Asia)
- Hotel and spa pools
- Health clubs
- Wellness centres
- Therapy pools



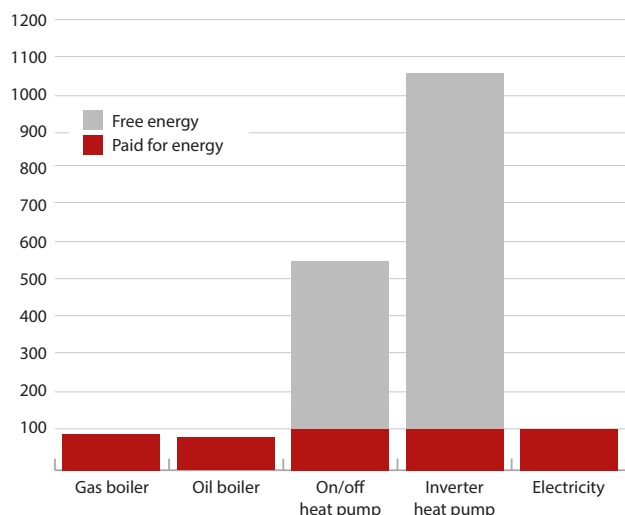
The PoolTherm App for our Calorex I-PAC inverter heat pumps is available on Android and iOS. Simply search for 'PoolTherm' in App Store or Google Play and download it today!



INVERTER HEAT PUMPS CALOREX I-PAC 50-100BHC

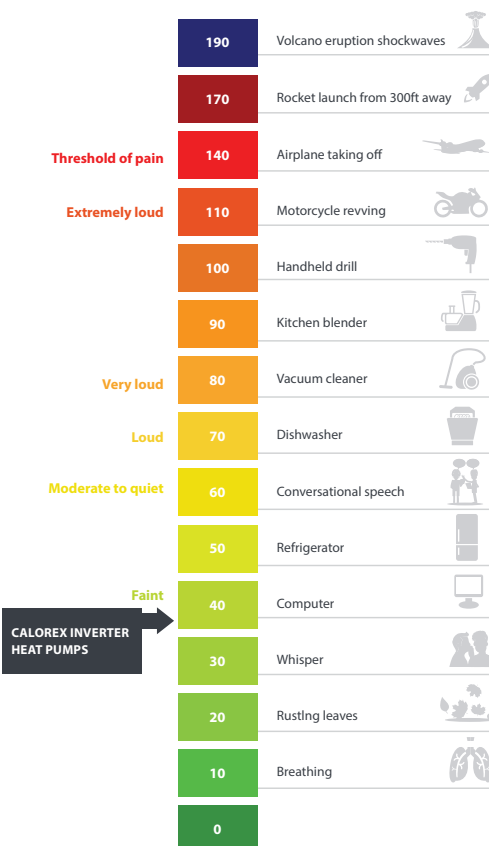


Heating method efficiency chart



Great value, and environmentally conscious heating option, with energy consumption half that of a traditional on/off heat pump, and 1/10 of that for gas or electric pool heating.

Where our heat pump sits on the decibel scale



| Specifications | Units | I-PAC 50BHC | I-PAC 100BHC |
|--|-------------------|--------------------|--------------------|
| Air temperature range | °C | 0-55 | 0-55 |
| Performance – air 27°C 80% RH, water 27°C | | | |
| Heating capacity | kW | 60.2 | 115.0 |
| Average COP @ 50% speed | | 10.5 | 10.0 |
| Performance – air 15°C 70% RH, water 26°C | | | |
| Heating capacity | kW | 40.1 | 80.8 |
| Average COP @ 50% speed | | 7.0 | 7.0 |
| Performance – air 45°C 50% RH, water 32°C | | | |
| Cooling capacity | kW | 25.1 | 50.3 |
| Power supply | V/Hz | 400/3ph/50 | 400/3ph/50 |
| Rated input power | kW | 2.26-8.90 | 4.68-17.5 |
| Rated current input | A | 3.27-12.9 | 6.78-25.3 |
| Max. input current | A | 19 | 38 |
| Water flow | m ³ /h | 20-25 | 40-50 |
| Water Pressure Drop | kPa. | 50 is 13 | 100 is 25 |
| Water connection | mm | 75 | 110 |
| Compressor | | Inverter | Inverter |
| Heat exchanger | | Titanium | Titanium |
| R410A gas weight/CO ₂ equivalent | kg/t | 8.0/16.70 | 16.0/33.41 |
| Sound pressure level @ 1m | dB(A) | 53-61 | 55-64 |
| Sound pressure level @ 10m | dB(A) | 33-41 | 35-44 |
| Product size (l x w x h) | mm | 1020 x 1110 x 1260 | 2100 x 1090 x 1280 |
| Weight | kg | 247 | 453 |

SWIMMING POOL DEHUMIDIFIERS

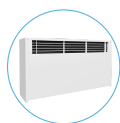
When moisture is left unchallenged, this can present a major problem for an indoor pool.

Not only does it create an uncomfortable atmosphere for swimmers and bathers, but the growth of mould is encouraged and structural damage can leave your pool area looking less than luxurious. Our pool dehumidifiers physically remove moisture from the air to ensure the environment stays controlled and your home pool projects are protected.



DEHUMIDIFICATION SOLUTIONS FOR: PRIVATE AND COMMERCIAL SWIMMING POOLS

QUICK GUIDE



DH 30-60 MTW



DH 75-110AX



VARIHEAT SYSTEMS

POOL TYPE



INDOOR



INSTALLATION



WALL-MOUNTED



THROUGH-THE-WALL



FLOOR-STANDING



DUCTED



APPLICATIONS



PRIVATE POOLS



SPA & THERAPY



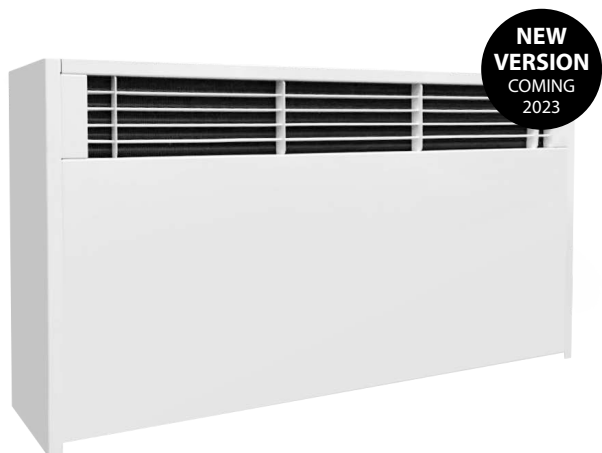
HOLIDAY PARKS &
CAMPSITES



HOTELS, SCHOOLS &
HEALTH CLUBS



WALL-MOUNTED SWIMMING POOL DEHUMIDIFIERS CALOREX DH 30-60 MTW

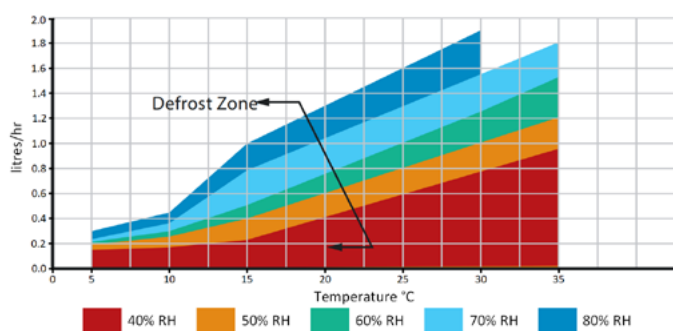


DH 30-60 MTW

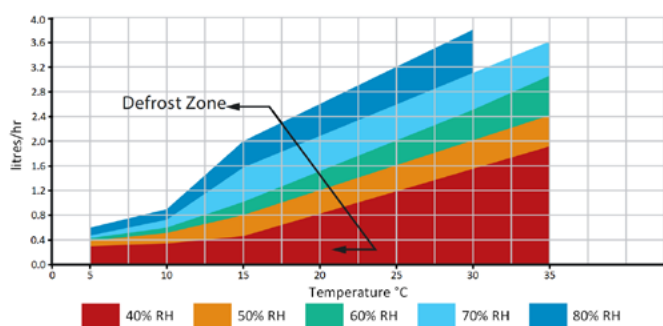
The compact DH 30 MTW and 60 MTW are high performance, low cost wall-mounted dehumidifiers with optional integrated air heating. The units have been designed for small swimming pools or spas and stand out for their ability to maintain a comfortable humidity, minimise condensation and keep heating costs low.

Performance data

DH 30 MTW



DH 60 MTW



- High moisture extraction for low power consumption
- Zero ozone depleting refrigerant
- Integral humidistat
- Polyester coated evaporator and condense
- Hot gas defrost for low temperature operation
- Quiet centrifugal fans
- Many options for flexible installation
- Remote humidistat and on/off function
- Self contained with fully automatic operation

Options

- Through-the-wall version with optional water heater
- Floor stand kit
- Electric heater

WALL-MOUNTED SWIMMING POOL DEHUMIDIFIERS CALOREX DH 30-60 MTW



| Specifications | Units | DH 30AX-MTW | DH 60AX-MTW |
|---|-------------------|-------------------|-------------------|
| Operating temperature range | °C | 0-35 | 0-35 |
| Dehumidification @ 30°C/60% RH | l/24h | 30 | 60 |
| Heat recovered to air @ 30°C/60% RH | kW | 1.9 | 3.5 |
| Air flow | m ³ /h | 490 | 720 |
| Sound pressure level @ 3m | dB(A) | 52 | 54 |
| Refrigerant | | R407C | R407C |
| R407C gas weight/CO ₂ equivalent | kg/t | 0.5/0.89 | 0.8/1.42 |
| Power supply | V/Hz | 230/1ph/50 | 230/1ph/50 |
| Dehumidifier power input | kW | 0.75 | 1.2 |
| FLA | A | 4.4 | 7.5 |
| Maximum supply fuse | A | 10 | 13 |
| LRA (compressor start) | A | 15.8 | 30 |
| Heater type | | Optional Electric | Optional Electric |
| Heater output | kW | 2.0 | 4.0 |
| Product size (w x d x h) | mm | 782 x 270 x 648 | 1247 x 270 x 648 |
| Weight | kg | 40 | 60 |
| Condensate drain size, ID (flexible plastic hose) | mm | 16 | 16 |

FLOOR-STANDING SWIMMING POOL DEHUMIDIFIERS CALOREX DH 75-110AX



DH 110

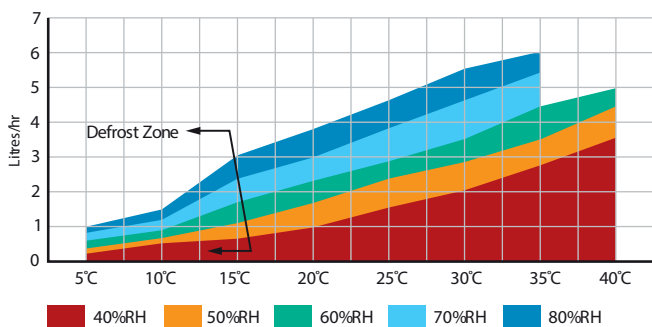
DH 75-110AX are floor-standing high performance and high capacity dehumidifiers. With high moisture extraction for low energy use, as well as being corrosion free and easy to clean, they are ideal for keeping your swimming pool environment healthy and the humidity under control. Options are also available for additional air heating, and through-the-wall installation that can be situated adjacent to the pool hall.



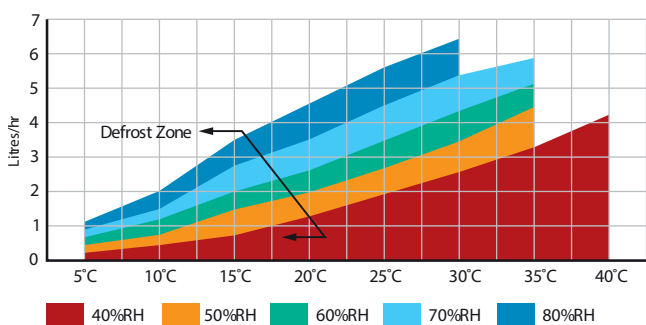
- High moisture extraction for low power consumption
- Corrosion free, easy to clean aluminium air grille with easy clean air filter
- Low internal operating pressures = long useful life
- Adjustable air outlet
- Quiet centrifugal fans, two speeds
- Hot gas defrost (allows operation to 5°C air temperature)
- Remote humidistat and on/off function

Performance data

DH 75



DH 110



Options

- Through-the-wall version
- LPHW air heater complete with 3 way valve and 12V thermostat interlock
- 400V-3ph option for DH 110



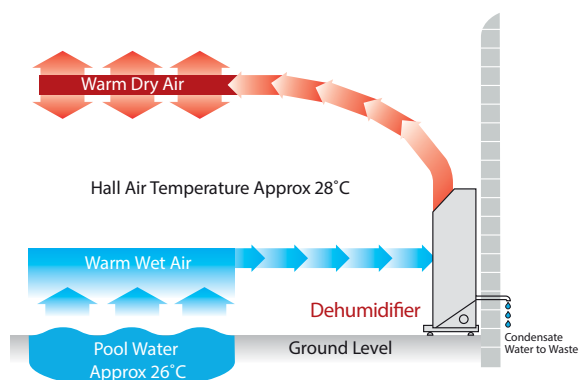
Each Calorex unit includes an adjustable humidistat controlling relative humidity (RH) in the ideal range of 55% – 65%. With RH under control, condensation can be minimised by selecting the most appropriate installation from the schematics shown on the next page. Note: vulnerable areas such as windows, roof lights or other cold bridges may form condensation at low external air temperatures unless dry air is blown directly onto them.

FLOOR-STANDING SWIMMING POOL DEHUMIDIFIERS CALOREX DH 75-110AX

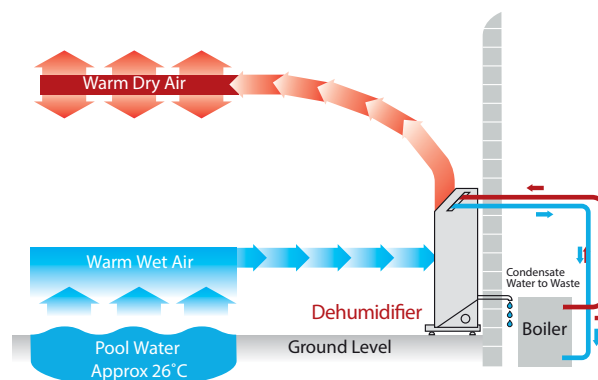


INSTALLATION OPTIONS

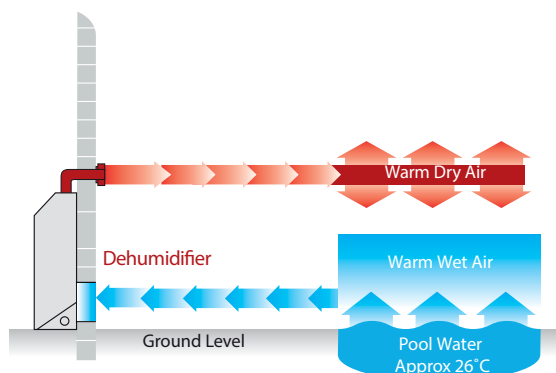
Floor-standing air flow



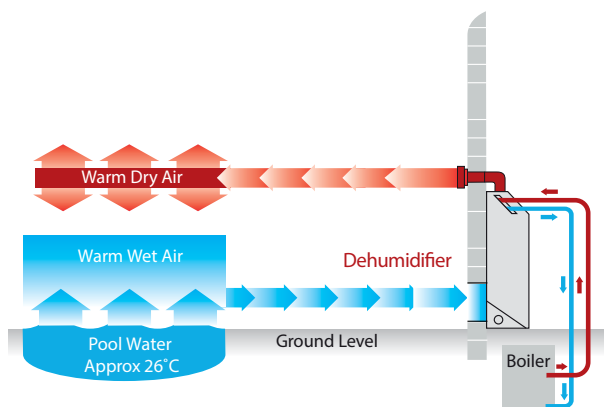
Floor-standing with air heating



Through-the-wall



Through-the-wall with air heating



| Specifications | Units | DH 75AX | DH 110AX |
|---|-------------------|------------------|------------------|
| Operating temperature range | °C | 5-35 | 5-35 |
| Dehumidification @ 30°C/60% RH | l/h | 3.6 | 4.5 |
| Heat recovered to air @ 30°C/60% RH | kW | 4.0 | 5.2 |
| Air flow | m ³ /h | 1,180 | 1,180 |
| External static pressure | Pa | 0 | 0 |
| Sound pressure level @ 3m | dB(A) | 53 | 53 |
| R407C gas weight/CO2 equivalent | kg/t | 2/3.55 | 2/3.55 |
| Power supply | V/Hz | 230/1ph/50 | 230/1ph/50 |
| Nominal power consumption | kW | 1.5 | 2.1 |
| FLA | A | 9.5 | 12 |
| Maximum supply fuse | A | 13 | 20 |
| LRA (compressor start) | A | 55 | 66 |
| Heater type | | Optional LPHW | Optional LPHW |
| Heat output @ 80°C flow | kW | 8.9 | 8.9 |
| Flow rate | l/min | 9.6 | 9.6 |
| Product size (w x d x h) | mm | 1520 x 385 x 796 | 1520 x 385 x 796 |
| Weight | kg | 143 | 144 |
| Condensate drain size (brass compression) | mm | 15 | 15 |



AW 1200



- Pool hall dehumidification
- Dynamic heat pump heat recovery to pool and air
- Constant flow EC fan (models 600, 900, 1200)
- Speed controllable EC fan (model 1500)
- PLC control with 3.5" touchscreen user interface
- Remote monitoring/control

AA+LPHW models add:

- Integral LPHW heat exchanger for air heating

AW models add:

- Dynamic heat pump heat recovery to pool and air
- Integral LPHW heat exchangers for pool and air

The Variheat range are sophisticated air handling units incorporating heat pump dehumidification technology. With dynamic heat recovery using a heat pump, the Variheat is the essential choice for a domestic or light commercial indoor swimming pool. Over 3000 configurations offer the ultimate flexibility for tight plant room spaces. This range is purpose designed for swimming pool environmental control, providing the necessary comfort, moisture related structural protection and economical operation.

Options

- Fresh air module
- Upgraded LPHW heat exchanger for air
- Electric resistance air heaters (6/12/18kW)

Electrical heater option notes

- In lieu of LPHW heat exchangers
- 6kW or 12kW is available for 600 and 900 models
- 12kW or 18kW is available for 1200 and 1500 models



Variheat touchscreen controls

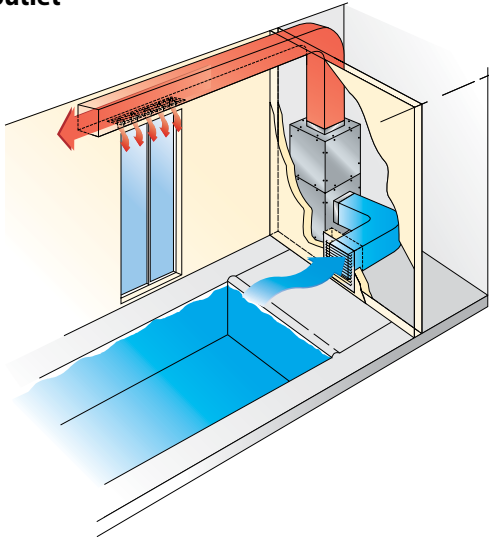
The Variheat range are sophisticated air handling units incorporating heat pump dehumidification technology. With dynamic heat recovery using a heat pump, the Variheat is the essential choice for a domestic or light commercial indoor swimming pool.



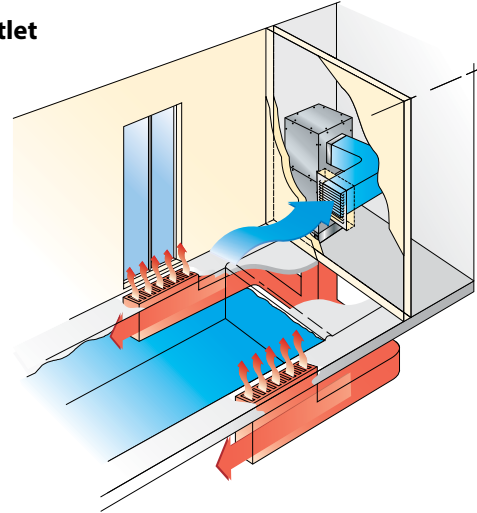


INSTALLATION OPTIONS

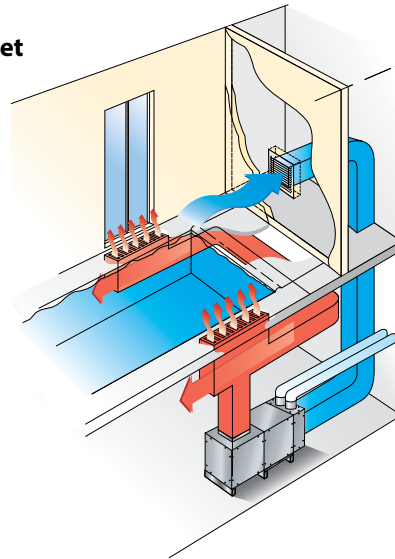
Top outlet



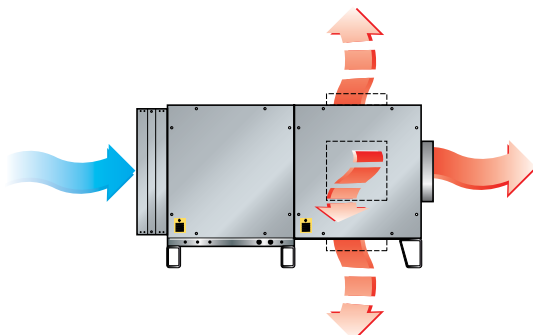
Bottom outlet



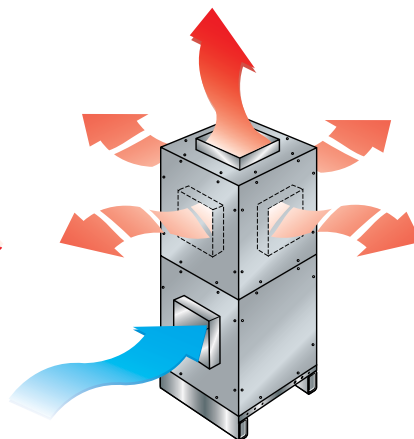
Basement outlet



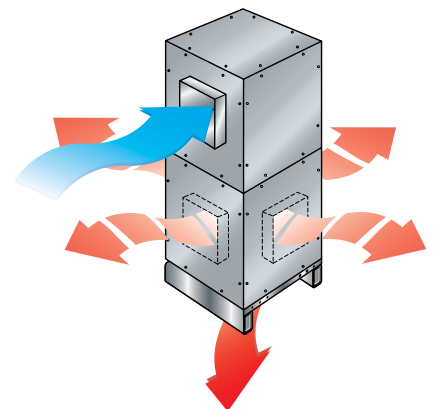
Horizontal outlet



Top outlet



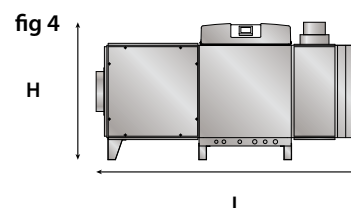
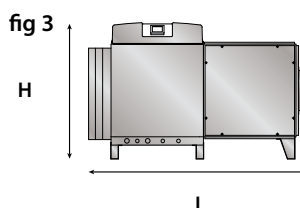
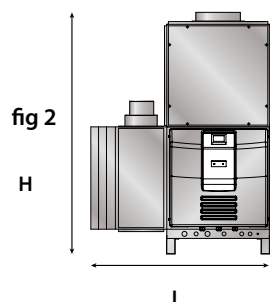
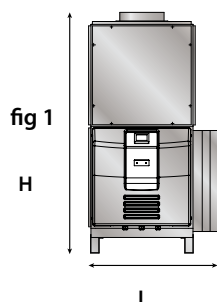
Bottom outlet





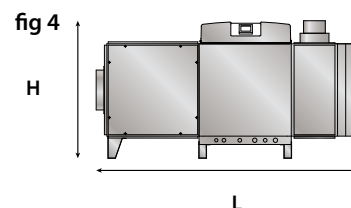
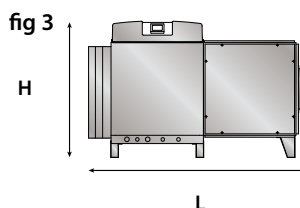
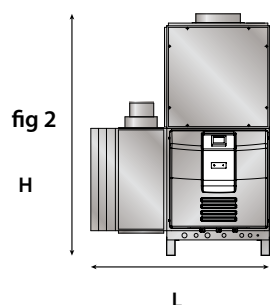
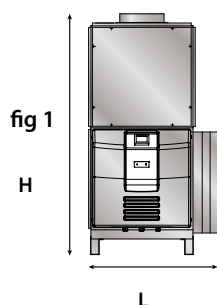
CONFIGURATIONS

Variheat 600/900



| | fig 1 | fig 2 | fig 3 | fig 4 |
|---|-------|-------|-------|-------|
| H | 1574 | 1574 | 977 | 1028 |
| L | 842 | 1180 | 1574 | 1929 |
| D | 839 | 839 | 700 | 700 |

Variheat 1200/1500



| | fig 1 | fig 2 | fig 3 | fig 4 |
|---|-------|-------|-------|-------|
| H | 1778 | 1778 | 1110 | 1130 |
| L | 942 | 1295 | 1778 | 2133 |
| D | 955 | 955 | 800 | 800 |

Example configurations are shown but there are over 3000 configurations available offering the ultimate flexibility for tight plant room spaces. This range is purpose designed for swimming pool environmental control, providing the necessary comfort, moisture related structural protection and economical operation.



| Specifications | Units | AW 600 | AA 600 | AW 900 | AA 900 | AW 1200 | AA 1200 | AW 1500 | AA 1500 |
|---|-------------------|----------|----------|----------|-----------|-----------|----------|----------|-----------|
| Air flow | m ³ /h | 2,000 | 2,000 | 2,500 | 2,500 | 3,500 | 3,500 | 4,300 | 4,300 |
| External available static pressure | Pa | 330 | 330 | 220 | 220 | 290 | 290 | 350 | 350 |
| Fresh air flow (option) | m ³ /h | 0-900 | 0-900 | 0-900 | 0-900 | 0-900 | 0-900 | 0-900 | 0-900 |
| External available static pressure | Pa | 100 | 100 | 100 | 100 | 100 | 100 | 100 | 100 |
| Dehumidification @ 30°C/60% RH | l/h | 4.6 | 4.6 | 6.5 | 6.5 | 8.5 | 8.5 | 10.5 | 10.1 |
| Dehumidification @ 30°C/70% RH | l/h | 5.5 | 5.5 | 7.8 | 7.8 | 10.8 | 10.8 | 13.2 | 13.2 |
| Heat to air | | | | | | | | | |
| Net via heat pump (Mode B) | kW | 5.1 | 5.1 | 7.1 | 7.1 | 10.0 | 10.0 | 14.0 | 14.0 |
| Via standard LPHW @ 80°C | kW | 11.0 | 11.0 | 13.5 | 13.5 | 24.0 | 24.0 | 28.0 | 28.0 |
| Max. available (Mode B + standard LPHW) | kW | 14.0 | 14.0 | 18.6 | 18.6 | 30.0 | 30.0 | 36.0 | 36.0 |
| Via upgraded LPHW @ 55°C | kW | 9.4 | 9.4 | 11.5 | 11.5 | 20.4 | 20.4 | 23.8 | 23.8 |
| Max. available (Mode B + upgraded LPHW) | kW | 12.7 | 12.7 | 16.9 | 16.9 | 27.0 | 27.0 | 36.8 | 36.8 |
| Heat to water | | | | | | | | | |
| Net via heat pump (Mode A) | kW | 5.5 | 0 | 7.4 | 0 | 10.0 | 0 | 12.5 | 0 |
| Via LPHW @ 80°C | kW | 18.0 | 0 | 30.0 | 0 | 30.0 | 0 | 40.0 | 0 |
| Max. available (Mode A + LPHW) | kW | 23.5 | 0 | 37.4 | 0 | 40.0 | 0 | 52.5 | 0 |
| Refrigerant | | R454C | R454C | R454C | R454C | R407C | R407C | R407C | R407C |
| Gas weight/CO ₂ equivalent | kg/t | 1.8/0.26 | 1.8/0.26 | 2.0/0.29 | 1.85/0.27 | 2.85/5.06 | 2.7/4.79 | 3.0/5.32 | 2.65/4.70 |
| Nominal power consumed | kW | 2.1 | 2.1 | 2.8 | 2.8 | 2.9/5.14 | 2.9/5.14 | 3.0/5.32 | 3.0/5.32 |

AW denotes heat recovery to air/water and LPHW heaters for air/water
AA denotes heat recovery to air and optional LPHW heater for air only

SWIMMING POOL AIR HANDLING UNITS

ENVIRONMENTAL CONTROL SOLUTIONS FOR: PUBLIC AND COMMERCIAL SWIMMING POOLS



DELTA SYSTEMS

QUICK GUIDE

POOL TYPE



INDOOR



INSTALLATION



PLANT ROOM



OPERATION



HEATING, COOLING,
DEHUMIDIFICATION
& VENTILATION



APPLICATIONS



PUBLIC POOLS



HOTELS, SCHOOLS &
HEALTH CLUBS



HOLIDAY &
WATER PARKS



LEISURE CENTRES





DELTA 4

The Delta range are sophisticated air handling units incorporating hybrid heat pump and fresh air dehumidification technology. With dynamic heat recovery to swimming pool water and air using a heat pump, the Delta is the ultimate solution for a commercial or public indoor swimming pool.

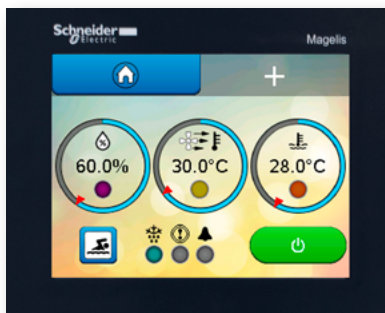


- Dynamic heat pump heat recovery to pool and air
- Self-regulating fresh air control with heat recovery
- Automatic control of exhaust air volume to match pool usage
- Free-cooling (Delta 2)
- Free-cooling and heat pump air cooling (Delta 4-16)
- Integral LPHW heat exchangers for pool and air
- Speed controllable EC/inverter fans in all models
- PLC control with 5.7" touchscreen user interface
- Remote monitoring/control

Remote monitoring/control

As standard the following remote connectivity is available:

- Screen mirroring to Android/iOS mobile devices using third-party app
- Screen mirroring to web browser with ActiveX
- BMS interfaces for Modbus, BACnet IP and BACnet MS/TP
- Wired remote control interfaces



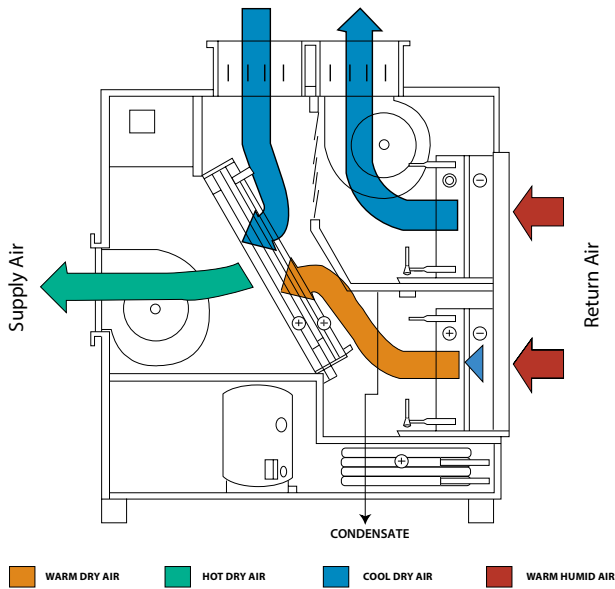
Delta touchscreen controls

SWIMMING POOL AIR HANDLING UNITS CALOREX DELTA 2-4-6-8-10-12-14-16



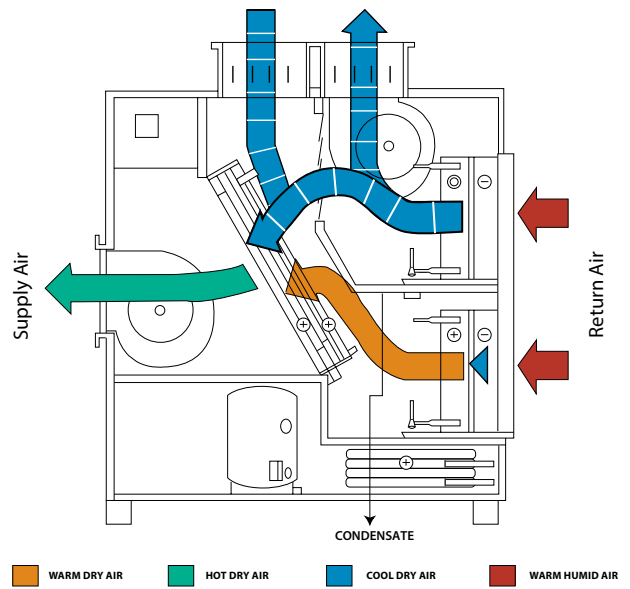
HOW THE AIR FLOWS THROUGH THE DELTA

Full dehumidification and heat recovery



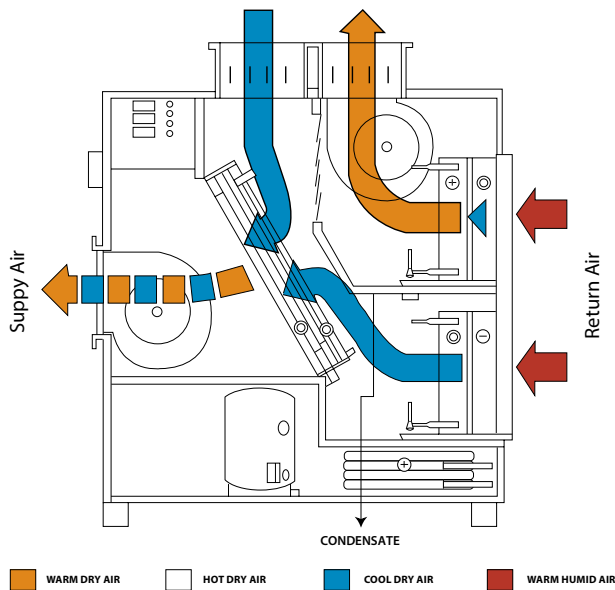
Delta operating on maximum dehumidification of pool air with full heat recovery to pool water and air. Available energy is removed from exhaust air stream. Supplementary heat, if required, supplied by LPHW (water or air).

Light dehumidification and heat recovery



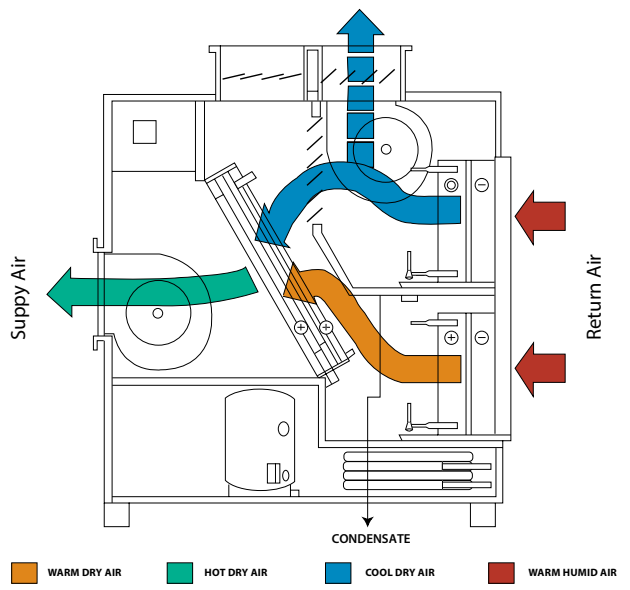
Delta operating on light dehumidification with full heat recovery and reduced fresh air stream – control system automatically selects correct operating mode and damper position. LPHW heat available when required.

Air-conditioning



Delta models 4 and above provide an air conditioning facility to minimise the effects of solar gain from larger glazed areas or very high usage. Automatic damper and mode control.

Night set back



Air temperature set back control is incorporated as standard in all Delta units and controlled by a time clock. Pool hall air is dropped to a lower temperature for maximum economy. Air recirculation is maintained, dampers allow low fresh air flow.

| Specifications | Units | DT 2 | DT 4 | DT 6 | DT 8 | DT 10 | DT 12 | DT 14 | DT 16 |
|--|-------------------|-----------|-----------|-----------|-----------|-----------|-----------|------------|------------|
| Nominal recirculation air flow | m ³ /h | 2,600 | 3,000 | 4,000 | 5,000 | 6,000 | 7,000 | 10,000 | 12,000 |
| Exhaust/fresh air flow (stepped control) | m ³ /h | 130-1,300 | 150-1,500 | 200-2,000 | 250-2,500 | 300-3,000 | 350-3,500 | 670-6,700 | 850-8,000 |
| Total dehumidification @ 28°C/60% RH by heat pump and maximum fresh air | l/h | 10.9 | 12.5 | 16.6 | 20.8 | 25.0 | 29.2 | 56.5 | 62.4 |
| Heat to air | | | | | | | | | |
| Via heat pump (Mode B) | kW | 4.9 | 5.1 | 6.6 | 8.0 | 10.0 | 12.1 | 30.0 | 35.0 |
| Via standard LPHW @ 80°C | kW | 22 | 25 | 30 | 35 | 38 | 42 | 85 | 90 |
| Via upgraded LPHW @ 55°C | kW | 19 | 21 | 26 | 30 | 32 | 36 | 72 | 77 |
| Total Mode B + standard LPHW | kW | 26.9 | 30.1 | 36.6 | 43.0 | 48.0 | 54.1 | 115.0 | 125.0 |
| Heat to pool water | | | | | | | | | |
| Via heat pump (Mode A) | kW | 5.5 | 5.8 | 8.0 | 10.0 | 12.5 | 15.0 | 35.0 | 43.0 |
| Via LPHW @ 80°C | kW | 23 | 33 | 33 | 33 | 40 | 40 | 65 | 65 |
| Via LPHW @ 55°C | kW | 11 | 16 | 16 | 16 | 20 | 20 | 32 | 32 |
| Total Mode A + LPHW | kW | 28.5 | 38.8 | 41.0 | 43.0 | 52.5 | 55.0 | 100.0 | 108.0 |
| Cooling duty | | | | | | | | | |
| Total | kW | 0 | -4.2 | -5.5 | -6.7 | -8.4 | -10.1 | -23.0 | -28.0 |
| Sensible | kW | 0 | -2.9 | -3.9 | -4.7 | -5.9 | -7.1 | -13.0 | -15.0 |
| Nominal power consumed | kW | 2.9 | 2.9 | 3.4 | 4.4 | 5.9 | 7.4 | 12.3 | 17.0 |
| R407C gas weight/CO ₂ equivalent | kg/t | 3.0/5.32 | 6.0/10.64 | 7.8/13.84 | 7.8/13.84 | 9.0/15.97 | 8.0/14.19 | 22.5/38.14 | 22.5/38.14 |
| Width | mm | 1740 | 1840 | 1840 | 1840 | 1840 | 1840 | 2860 | 2860 |
| Depth | mm | 654 | 704 | 704 | 704 | 854 | 854 | 1126 | 1126 |
| Height | mm | 1685 | 1970 | 1970 | 1970 | 1970 | 1970 | 2120 | 2120 |
| Weight | kg | 310 | 350 | 360 | 370 | 410 | 460 | 954 | 1020 |

Options

- Delta 2-6 single or three phase
- Delta 8-16 three phase only
- Upgraded LPHW heat exchanger for air heating
- Left-hand or right-hand orientation (Delta 4-16)
- Top, side or bottom supply fan outlet
- Front or rear supply fan outlet (Delta 14-16)
- Rear exhaust and fresh air connections (Delta 14-16)
- Connection for RCU (Delta 16)

CONDENSE DEHUMIDIFIERS

Managing the moisture level in your buildings is crucial to creating a comfortable environment for your team and customers, and minimising the threat and costs of moisture damage to the structure. Our high-performance dehumidifiers help you achieve both with incredible ease of use.

Our extensive range includes state-of-the-art condensation and adsorption dehumidifiers, meaning we can impartially determine the right type for your circumstances, with a choice of wall-mounted or floor-standing solutions available.

Whether you need to preserve valuable artefacts or create a drying room for your workers, our dehumidifiers offer complete control of humidity levels across a wide variety of commercial and industrial applications.

WHY CHOOSE OUR COMMERCIAL PRODUCTS?



CHOOSING THE BEST SOLUTION

Our wide range of units and operating temperatures ensure there is a system to fit every commercial or industrial need.



LARGE SCALE INDUSTRIAL DRYING

Refrigerant or adsorption drying solutions for manufacturing, process drying and cold storage.



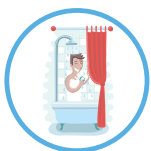
REDUCE OPERATING COSTS

We focus on developing energy saving units



CREATING HEALTHY ENVIRONMENTS

Our wall-mounted and floor-standing dehumidifiers prevent mould and bacteria development and keep stored goods and artefacts dry.



SUSTAINABLE HEATING SOLUTIONS

Hot water heat pumps provide a sustainable heating solution which, compared to fossil fuel or direct electric systems, will dramatically cut operating costs and carbon emission.



WORK IN HEALTHY CONDITIONS

Our heaters, dehumidifiers and coolers keep temperature and humidity at a comfortable level.



PROTECTING THE ENVIRONMENT

Our development teams focus on reducing the carbon foot print by making our products as environmentally friendly as possible.



USER AND MAINTENANCE FRIENDLY

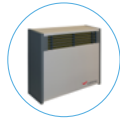
Our products are easy to install, use and maintain.

DEHUMIDIFICATION SOLUTIONS FOR: BUILDINGS, STORAGE, AGRICULTURE, FOOD & BEVERAGE

QUICK GUIDE



DH 15



DH 30-60



DH 75-110AX/BX



DH 150-300-600



DH 334

INSTALLATION



WALL-MOUNTED



THROUGH-THE-WALL



FLOOR-STANDING



DUCTABLE



APPLICATIONS



DRYING ROOMS



PRESERVATION



MUSEUMS, ARCHIVES & GALLERIES



DATA CENTRES & ELECTRONICS



CONFECTIONERY

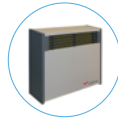


DEHUMIDIFICATION SOLUTIONS FOR: BUILDINGS, STORAGE, AGRICULTURE, FOOD & BEVERAGE

QUICK GUIDE



DH 15



DH 30-60



DH 75-110AX/BX



DH 150-300-600



DH 334

INSTALLATION



WALL-MOUNTED



THROUGH-THE-WALL



FLOOR-STANDING



DUCTABLE



APPLICATIONS



AGRICULTURE



FOOD AND BEVERAGE



STORAGE &
WAREHOUSING



GARAGES &
CAR STORAGE



PHARMACEUTICAL &
SCIENTIFIC



WALL-MOUNTED DEHUMIDIFIERS CALOREX DH 15



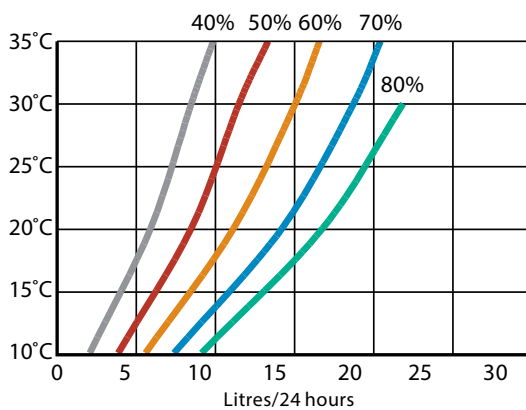
DH 15

The DH 15 wall-mounted dehumidifier has a compact design for installation in small areas, making it an ideal solution for stairwells, corridors and changing rooms. Being fully self contained, with tamper proof controls is perfect for public buildings such as schools, museums and galleries.



- Compact design for installation in small areas
- Self contained with fully automatic operation
- Integral humidistat
- Tamper proof controls
- Epoxy polyester painted zintec steel cabinet
- Hot gas defrost for low temperature operation
- Air filter

Performance data



Options

- Through-the-wall version

| Specifications | Units | DH 15AX |
|---|-------------------|-----------------|
| Operating temperature range | °C | 0-35 |
| Dehumidification @ 30°C/60% RH | l/24h | 15 |
| Heat recovered to air @ 30°C/60% RH | kW | 0.9 |
| Air flow | m ³ /h | 225 |
| Sound pressure level @ 3m | dB(A) | 53 |
| R407C gas weight/CO ₂ equivalent | kg/t | 0.34/0.6 |
| Power supply | V/Hz | 230/1ph/50 |
| Nominal power consumption | kW | 0.43 |
| FLA | A | 3.8 |
| Maximum supply fuse | A | 10 |
| LRA (compressor start) | A | 18 |
| Product size (w x d x h) | mm | 825 x 363 x 320 |
| Weight | kg | 33 |
| Condensate drain size, ID (flexible plastic hose) | mm | 10 |

WALL-MOUNTED DEHUMIDIFIERS CALOREX DH 30



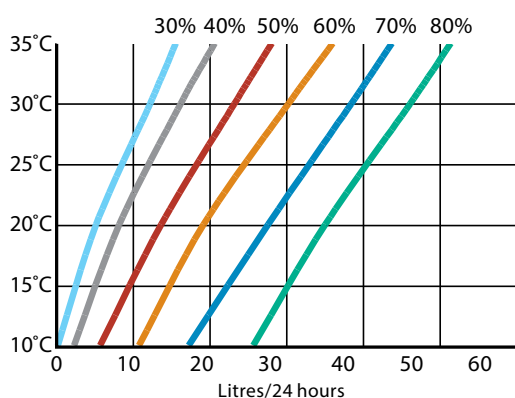
DH 30

The DH 30 is a high performance, low cost wall-mounted dehumidifier with integrated air heating option available. Designed to treat spaces, such as garages, changing rooms and archives, it maintains a comfortable humidity, minimises condensation and keeps heating costs to a minimum. For drying rooms it is a great compact solution.



- Self contained with fully automatic operation
- Integral humidistat
- Polyester coated evaporator and condenser
- Powder coated galvanised steel cabinet
- Hot gas defrost for low temperature operation
- Quiet centrifugal fans
- Remote humidistat and on/off function

Performance data



Options

- Through-the-wall version
- Electric air heater
- Floor stand kit

| Specifications | Units | DH 30AX | DH 30AXP |
|---|-------------------|-----------------|-------------------|
| Operating temperature range | °C | 0-35 | 0-35 |
| Dehumidification @ 30°C/60% RH | l/24h | 30 | 30 |
| Heat recovered to air @ 30°C/60% RH | kW | 1.9 | 1.9 |
| Air flow | m ³ /h | 490 | 490 |
| Sound pressure level @ 3m | dB(A) | 52 | 52 |
| R407C gas weight/CO ₂ equivalent | kg/t | 0.5/887 | 0.5/0.9 |
| Power supply | V/Hz | 230/1ph/50 | 230/1ph/50 |
| Dehumidifier power input | kW | 0.75 | 0.75 |
| FLA | A | 4.4 | 12.7 |
| Maximum supply fuse | A | 10 | 20 |
| LRA (compressor start) | A | 15.8 | 15.8 |
| Heater type | | | Standard Electric |
| Heater output | kW | | 2.0 |
| Product size (w x d x h) | mm | 782 x 270 x 648 | 782 x 270 x 648 |
| Weight | kg | 40 | 40 |
| Condensate drain size, ID (flexible plastic hose) | mm | 16 | 16 |

WALL-MOUNTED DEHUMIDIFIERS CALOREX DH 60



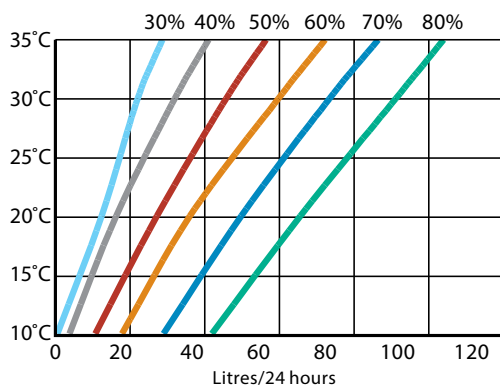
DH 60

The DH 60 is a high performance, low cost wall-mounted dehumidifier with integrated air heating option available. Designed to treat spaces, such as garages, changing rooms, drying rooms and archives, it maintains a comfortable humidity, minimises condensation and keeps heating costs to a minimum.



- Self contained with fully automatic operation
- Integral humidistat
- Polyester coated evaporator and condenser
- Powder coated galvanised steel cabinet
- Hot gas defrost for low temperature operation
- Quiet centrifugal fans
- Remote humidistat and on/off function

Performance data



Options

- Through-the-wall version
- Electric air heater
- Floor stand kit

| Specifications | Units | DH 60AX | DH 60AXP |
|---|-------------------|------------------|-------------------|
| Operating temperature range | °C | 0-35 | 0-35 |
| Dehumidification @ 30°C/60% RH | l/24h | 60 | 60 |
| Heat recovered to air @ 30°C/60% RH | kW | 3.5 | 3.5 |
| Air flow | m ³ /h | 720 | 720 |
| Sound pressure level @ 3m | dB(A) | 54 | 54 |
| R407C gas weight/CO ₂ equivalent | kg/t | 0.8/1.42 | 0.8/1.42 |
| Power supply | V/Hz | 230/1ph/50 | 230/1ph/50 |
| Dehumidifier power input | kW | 1.2 | 1.2 |
| FLA | A | 7.5 | 24.2 |
| Maximum supply fuse | A | 13 | 32 |
| LRA (compressor start) | A | 30 | 30 |
| Heater type | | | Standard Electric |
| Heater output | kW | | 4.0 |
| Product size (w x d x h) | mm | 1247 x 270 x 648 | 1247 x 270 x 648 |
| Weight | kg | 60 | 60 |
| Condensate drain size, ID (flexible plastic hose) | mm | 16 | 16 |

FLOOR-STANDING DEHUMIDIFIERS

CALOREX DH 75-110AX/BX



DH 110

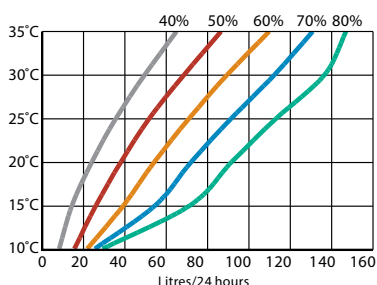
The DH 75 and DH 110 are floor-standing high capacity dehumidifiers. With high moisture extraction for low energy use, makes them ideal for dehumidifying your space. Options for additional air heating, and through-the-wall installation that can be situated adjacent to the area, makes them ideal for museums, offices, storage, data centres and more!



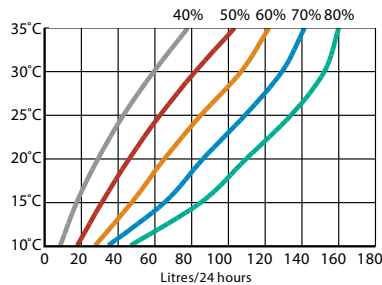
- Self contained with fully automatic operation
- Integral humidistat
- Polyester coated evaporator and condenser
- Stove enamelled aluminium cabinet
- Hot gas defrost for low temperature operation
- Quiet centrifugal fans, two speeds
- Remote humidistat and on/off function

Performance data

DH 75



DH 110



Options

- Through-the-wall version
- LPHW air heater
- Remote humidistat

| Specifications | Units | DH 75AX | DH 110AX | DH 110BX |
|---|-------------------|------------------|------------------|------------------|
| Operating temperature range | °C | 5-35 | 5-35 | 5-35 |
| Dehumidification @ 30°C/60% RH | l/24h | 86 | 108 | 108 |
| Heat recovered to air @ 30°C/60% RH | kW | 4.0 | 5.2 | 5.2 |
| Air flow | m ³ /h | 1,180 | 1,180 | 1,180 |
| Sound pressure level @ 3m | dB(A) | 53 | 53 | 53 |
| R407C gas weight/CO ₂ equivalent | kg/t | 2/3.55 | 2/3.55 | 2/3.55 |
| Power supply | V/Hz | 230/1ph/50 | 230/1ph/50 | 400/3ph/50 |
| Nominal power consumption | kW | 1.5 | 2.1 | 2.0 |
| FLA | A | 9.5 | 12.0 | 5.5 |
| Maximum supply fuse | A | 13 | 20 | 10 |
| LRA (compressor start) | A | 55 | 66 | 30 |
| Heater type | | Optional LPHW | Optional LPHW | Optional LPHW |
| Heater output @ 80°C flow | kW | 8.9 | 8.9 | 8.9 |
| Flow rate | l/min | 9.6 | 9.6 | 9.6 |
| Product size (w x d x h) | mm | 1520 x 385 x 796 | 1520 x 385 x 796 | 1520 x 385 x 796 |
| Weight | kg | 143 | 144 | 144 |
| Condensate drain size, ID (flexible plastic hose) | mm | 15 | 15 | 15 |

LARGE CAPACITY FLOOR-STANDING DEHUMIDIFIERS

CALOREX DH 150



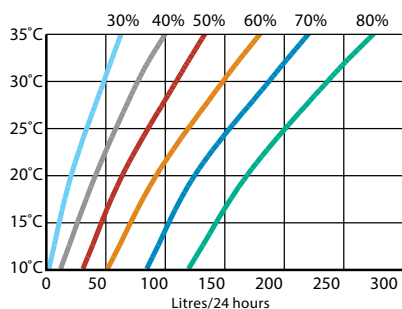
DH 150

The DH 150 high capacity floor-standing dehumidifier is self contained with fully automatic operation. With an integral humidistat, a 'constant flow' fan, and options for heating, you can be confident in your space being controlled to your needs. This makes it ideal for warehousing and storage, sub stations and data centres.



- Self contained with fully automatic operation
- Integral humidistat
- Constant flow fan – automatically adjusts to ducting
- Polyester coated evaporator and condenser
- Platisol coated galvanised steel cabinet
- Hot gas defrost for low temperature operation

Performance data



Options

- Return air filter
- Top discharge box
- Stainless steel casing

| Specifications | Units | DH 150AX | DH 150BX |
|---|-------------------|------------------|------------------|
| Operating temperature range | °C | 0-35 | 0-35 |
| Dehumidification @ 30°C/60% RH | l/24h | 150 | 150 |
| Heat recovered to air @ 30°C/60% RH | kW | 7.4 | 7.4 |
| Air flow | m ³ /h | 2,500 | 2,500 |
| Available static pressure | Pa | 0-200 | 0-200 |
| Sound pressure level @ 3m | dB(A) | 58 | 58 |
| Power supply | V/Hz | 230/1ph/50 | 400/3ph/50 |
| Nominal power consumption | kW | 2.3 | 2.3 |
| FLA (electrical) | A | 21 | 11.6 |
| Maximum supply fuse | A | 30 | 16 |
| LRA (compressor start) | A | 86 | 36 |
| Heater type | Optional | Top box electric | Top box electric |
| Heater output | kW | 9.0 | 9.0 |
| FLA (heater) | A | 36 | 12 |
| Maximum fuse size | A | 50 | 16 |
| R407C gas weight/CO ₂ equivalent | kg/t | 2.5/4.44 | 2.75/4.88 |
| Product size (w x d x h) | mm | 660 x 660 x 1313 | 660 x 660 x 1313 |
| Weight | kg | 130 | 130 |
| Condensate drain size | inch | ¾ BSPM | ¾ BSPM |

LARGE CAPACITY FLOOR-STANDING DEHUMIDIFIERS

CALOREX DH 300



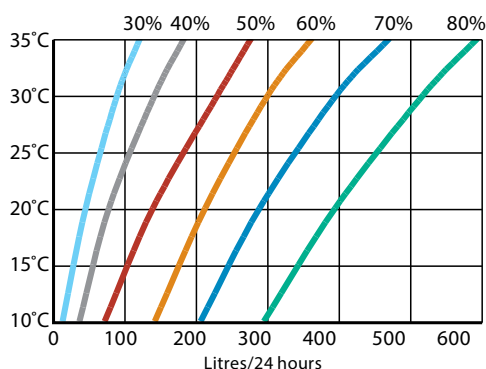
DH 300BY

The DH 300 high capacity floor-standing dehumidifier is self contained with fully automatic operation. With integral humidistat, a 'constant flow' fan, and option for condensate pump, you can be sure in your space being controlled to your demands. This makes it ideal for warehousing and storage, sub stations and data centres.



- Self contained with fully automatic operation
- Integral humidistat
- Polyester coated evaporator and condenser
- Plastisol coated galvanised steel cabinet
- Reverse cycle defrost for very low temperature operation
- Constant flow fan – automatically adjusts to ducting

Performance data



Options

- Return air filter
- Condensate pump

| Specifications | Units | DH 300BY |
|---|-------------------|------------------|
| Operating temperature range | °C | -15 - 35 |
| Dehumidification @ 30°C/60% RH | l/24h | 300 |
| Heat recovered to air @ 30°C/60% RH | kW | 14.7 |
| Air flow | m ³ /h | 5,000 |
| Available static pressure | Pa | 0-140 |
| Sound pressure level @ 3m | dB(A) | 66 |
| Power supply | V/Hz | 400/3ph/50 |
| Nominal power consumption | kW | 7.3 |
| FLA | A | 19 |
| Maximum supply fuse | A | 24 |
| LRA (compressor start) | A | 66 |
| R407C gas weight/CO ₂ equivalent | kg/t | 10.0/17.74 |
| Product size (w x d x h) | mm | 980 x 826 x 1475 |
| Weight | kg | 220 |
| Condensate drain size, ID (flexible plastic hose) | inch | 1½ BSPM |

LARGE CAPACITY FLOOR-STANDING DEHUMIDIFIERS

CALOREX DH 600



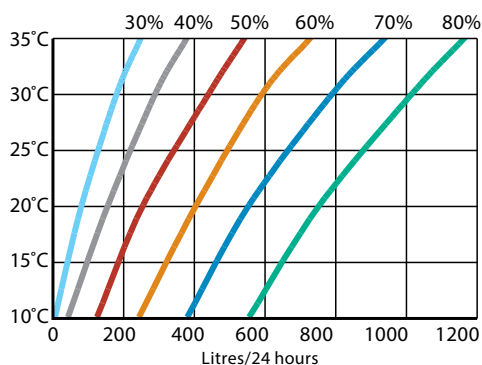
DH 600

The DH 600 high capacity floor-standing dehumidifier is self contained with fully automatic operation. With integral humidistat, a high pressure fan and option for a condensate pump, you can be sure in your space being controlled to your demands. This makes it ideal for warehousing and storage, sub stations and data centres.



- Self contained with fully automatic operation
- Integral humidistat
- Polyester coated evaporator and condenser
- Plastisol coated galvanised steel cabinet
- Reverse cycle defrost for very low temperature operation

Performance data



Options

- Return air filter
- Condensate pump
- Top discharge box
- Connections for RCU

| Specifications | Units | DH 600BY |
|---|-------------------|--------------------|
| Operating temperature range | °C | -15 - +35 |
| Dehumidification @ 30°C/60% RH | l/24h | 600 |
| Heat recovered to air @ 30°C/60% RH | kW | 29.7 |
| Air flow | m ³ /h | 9,000 |
| Available static pressure | Pa | 160 |
| Sound pressure level @ 3m | dB(A) | 63 |
| Power supply | V/Hz | 400/3ph/50 |
| Nominal power consumption | kW | 10 |
| FLA | A | 27 |
| Maximum supply fuse | A | 35 |
| LRA (compressor start) | A | 135 |
| R407C gas weight/CO ₂ equivalent | kg/t | 14.0/24.84 |
| Product size (w x d x h) | mm | 1730 x 1250 x 1600 |
| Weight | kg | 497 |
| Condensate drain size, ID (flexible plastic hose) | inch | 1½ BSPM |

HIGH TEMPERATURE FLOOR-STANDING PROCESS DRYING CALOREX DH 334



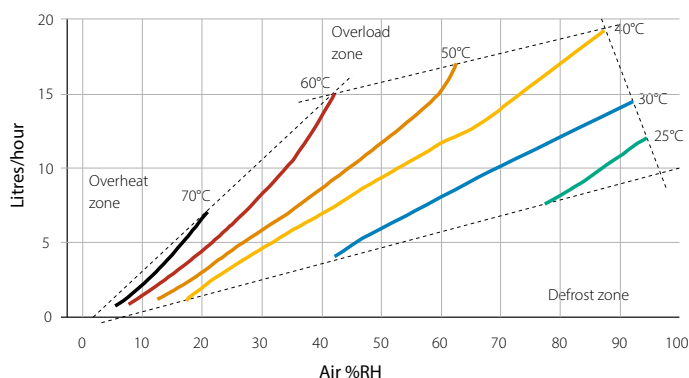
DH 334

The DH 334 process dryer is excellent for rapid moisture removal, at low cost per litre removed. Using R134a refrigerant it can operate at higher temperatures than standard dryers, and the latent energy is reclaimed to reduce the overall power consumption. The energy consumption is further reduced as drying can take place at lower temperatures than traditional heating methods, lowering risk of heat damage, and improving product quality.



- Rapid moisture removal at lowest cost per litre extracted
- Latent energy reclaimed to reduce power consumption
- Drying at lower temperatures reduces risk of heat damage
- Even drying improves product quality
- Low maintenance

Performance data



| Specifications | Units | DH 334BH |
|---|-------------------|------------------|
| Temperature range | °C | 30-70 |
| Dehumidification @ 30°C/60% RH | l/h | 408 |
| Heat to air via dehumidification | kW | 10 |
| Heat to air via resistance heaters and dehumidification | kW | 18.5 |
| Air flow | m ³ /h | 5,800 |
| External static pressure | Pa | 0 |
| Sound pressure level @ 3m | dB(A) | 69 |
| Power supply | V/Hz | 400/3ph/50 |
| Nominal power consumed | kW | 14.1 |
| Min. supply capacity | A | 29 |
| Max. supply fuse | A | 35 |
| Heater rating | kW | 9 |
| Heater FLA | A | 12 |
| Compressor LRA | A | 72 |
| R134a gas weight/CO ₂ equivalent | kg/t | 6.0/8.58 |
| Product size (w x d x h) | mm | 985 x 700 x 1476 |
| Weight | kg | 170 |

GLOSSARY

Model identification syntax

For example

- AW600A-SF01-E
 - AW = type of heat pump or range
 - 600 = size
 - A = power supply
 - -SF01 = physical configuration
 - -E = factory fitted option

Prefix = type of heat pump or product

| | |
|-----|---|
| AW | Air-to-water heat pump |
| AA | Air-to-air heat pump |
| CPT | C-PAC+ swimming pool heat pump |
| DH | Dehumidifier |
| DT | Delta |
| IPT | I-PAC/I-PAC+ Inverter swimming pool heat pump |
| TTW | Through-the-wall version of DH |
| VPT | V-PAC vertical inverter swimming pool heat pump |

Number = size of product

For example

| | |
|----------|--|
| I-PAC | 8, 12, 16, 22, 28 |
| Variheat | 600, 900, 1200, 1500 |
| Delta | 2, 4, 6, 8, 10, 14, 16 |
| DH | 15, 30, 33, 55, 60, 75, 110, 150, 300, 600 |

Suffix (first letter) = power supply

| | |
|---|---------------------------------|
| A | 220/240V 1-phase 50 Hz |
| B | 380/415V 3-phase 50 Hz (3~ + N) |

Suffix = features or operating parameters

| | |
|----|---|
| L | Low water temperature (e.g. swimming pools) |
| HC | Swimming pool heater/chiller |
| C | Chiller only |
| P | Electric air heater |
| X | Low temperature defrost |
| Y | Lowest temperature defrost |
| F | High pressure fan option |
| S | Soft-start |

Configuration details. Refer to individual products.

For example

| | |
|---------------|--|
| -SF01, -RF01 | Variheat build configuration |
| -EF, -ER | Delta handing |
| -SO, -TO, -RO | Delta supply fan direction |
| -BCDEFG | Delta options fitted |
| -L | Variheat air heater (AA models) |
| -L | Variheat air and water heaters (AW models) |
| -E | Variheat and Delta upgraded air heater |
| -FA | Variheat fresh air module |
| -FK | Filter kit |
| -PK | Pump kit |
| -DK | Duct flange kit |

DENMARK

Dantherm A/S
DK-7800 Skive
+45 96 14 37 00
sales.dk@dantherm.com

GERMANY

Dantherm GmbH
22844 Norderstedt
+49 40 526 8790

28832 Achim
+49 4202 97550
sales.de@dantherm.com

ITALY

Dantherm S.p.A.
37010 Pastrengo (VR)
+39 045 6770533

62012 Civitanova Marche (MC)
+39 0733 714368
sales.it@dantherm.com

SPAIN

Dantherm SP S.A.
28108 Alcobendas, Madrid
+34 91 661 45 00

46980 Paterna, Valencia
+34 961 524 866
sales.es@dantherm.com

UNITED KINGDOM

Dantherm Ltd
Maldon CM9 4XD
+44 (0)1621 856611
sales.uk@dantherm.com

FRANCE

Dantherm SAS
69694 Vénissieux Cedex
+33 4 78 47 11 11
sales.fr@dantherm.com

POLAND

Dantherm Sp. z o.o.
62-023 Gądko
+48 61 65 44 000
sales.pl@dantherm.com

NORWAY

Dantherm AS
3138 Skallestad
+47 33 35 16 00
sales.no@dantherm.com

SWEDEN

Dantherm AB
602 13 Norrköping
+46 (0)11 19 30 40
sales.se@dantherm.com

RUSSIA

Dantherm LLC
142800, Stupino
Moscow
+7 (495) 642 444 8
sales.ru@dantherm.com

SWITZERLAND

AirCenter AG
CH-5405 Baden Dättwil
+41 43 500 00 50
info@aircenter.ch

CHINA

MCS China
Baoshang, Shanghai, 201906
+8621 61486668
sales.cn@dantherm.com

Dealer:

KEEP UPDATED
FOLLOW US ON:



danthermgroup.com